

Pure Freude
an Wasser

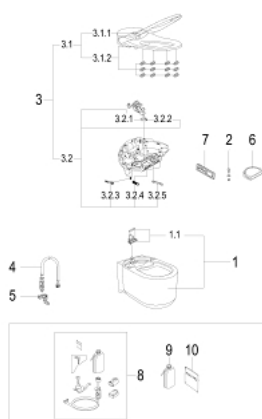


39 354 SH1 GROHE SENSIA ARENA SHOWER TOILET COMPLETE SYSTEM FOR CONCEALED FLUSHING CISTERNS, WALL-HUNG

PRODUKTO APRAŠYMAS (2/2)

- nozzle guard
- cable with system plug on device
- pressure 0.05 - 1 MPa (0.5 - 10 bar)
- nominal voltage 220-240 V AC
- main frequency 50-60 Hz
- type of protection IPX4
- complies with EN 1717
- CE approved
- recommended in combination with a GROHE Rapid SLX element (1,13 m installation height)

39 354 SH1 GROHE SENSIA ARENA SHOWER TOILET COMPLETE SYSTEM FOR CONCEALED FLUSHING CISTERNS, WALL-HUNG



ATSARGINĖS DALYS, rugpjūčio 2017 – dabar

1: WC-ceramic (Produkto nr. 14937000)

1.1: Fixing member rear (Produkto nr. 14969000)

2: Anti-theft screw (Produkto nr. 14972000)

3: E-bidet unit (Produkto nr. 14976000)

3.1: Cover (Produkto nr. 14979000)

3.1.1: WC lid (Produkto nr. 14925SH0)

3.1.2: WC seat (Produkto nr. 14924SH0)

3.2: Base plate assembly (Produkto nr. 14978000)

3.2.1: Spray (Produkto nr. 14929000)

3.2.2: Spray (Produkto nr. 14928000)

3.2.3: Filter (Produkto nr. 14927000)

3.2.4: Air filter (Produkto nr. 14933000)

3.2.5: Nozzle guard (Produkto nr. 14930000)

4: Connection hose assembly (Produkto nr. 14974000)

5: Hose clip (Produkto nr. 14971000)

6: Splash protection (Produkto nr. 14936000)

7: Remote control (Produkto nr. 14926001)

7: Remote control (Produkto nr. 14926002)

8: Descaling kit (Produkto nr. 46978001)*

9: Descaler bottle (Produkto nr. 46979000)*

10: Descaler for shower toilet (Produkto nr. 4697700M)*

* pasirenkami priedai