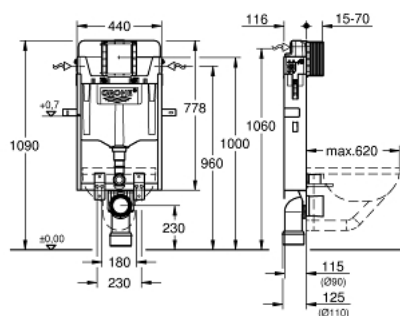


## 39 165 000 UNISSET ELEMENT FOR WC



### PRODUKTO APRAŠYMAS

- with flushing cistern GD 2, 6 - 9 l
- 778 x 440 x 116 mm
- for single installation
- 2 WC fixing bolts
- distance of fixing bolts 180/230 mm
- fixing device for ceramic
- outlet bend Ø 90 mm
- reducer Ø 90/110 mm
- inlet and outlet connecting set
- flushing cistern GD 2, 6 - 9 l, containing following features:
- adjustment ex factory 6 l and 3 l
- pneumatic discharge valve offering 3 modes of operation: dual flush or start/stop or single flush
- water supply from left/right/back or top
- low noise (group I acc. to German Noise Specification)
- cistern insulated against condensation
- 1/2" angle valve with push fit flexible hose union
- no tools required for the installation of the inspection shaft incl. protection during construction phase
- for vertical or horizontal use
- preparation for shower toilets with additional accessory 40 899 000 (sold separately)
- for mounting of small flush plates please order revision shaft 40 911 000 (sold separately)

## 39 165 000 UNISET ELEMENT FOR WC



**ATSARGINĖS DALYS** , rugsėjo 2014 – dabar

- 1: Threaded bolt (Produkto nr. 4276400M)
- 2: WC inlet and outlet connecting set (Produkto nr. 37311K00)
- 2.1: Basin fastening (Produkto nr. 43511SH0)
- 2.2: Connector (Produkto nr. 37119000)
- 3: Reducer (Produkto nr. 42242000)
- 4: PP-outlet bend Ø 90 mm (Produkto nr. 42327000)
- 5: Support for outlet bend (Produkto nr. 42243000)
- 6: Inspection shaft (Produkto nr. 66783000)
- 7: Filling valve (Produkto nr. 37095000)
- 7.1: Lever (Produkto nr. 43734000)
- 7.1.1: Seal (Produkto nr. 4377000M)
- 7.2: Valve head (Produkto nr. 43536000)
- 7.3: Membrane (Produkto nr. 4375800M)
- 7.4: Screw cap (Produkto nr. 43735000)
- 7.5: Valve float, 5 pcs. (Produkto nr. 4379100M)
- 7.6: Set of seals (Produkto nr. 43722000)\*
- 8: Support device (Produkto nr. 42246000)
- 9: Tube (Produkto nr. 42397000)
- 9.1: Sealing washer (Produkto nr. 0319100M)
- 10: Angle valve (Produkto nr. 42343000)
- 11: Dual Flush discharge valve AV1 (Produkto nr. 42320000)
- 11.1: Extension for overflow pipe (Produkto nr. 42313000)
- 11.2: Pneumatic hose (Produkto nr. 42319000)
- 11.3: Seal (Produkto nr. 42310000)
- 12: Valve seat for GD2 (Produkto nr. 42315000)
- 13: 4.5 l adapter for GD2 (Produkto nr. 42333000)\*
- 14: Retro-fit set (Produkto nr. 38796000)\*
- 15: Retrofit kit for shower toilets Sensia Arena and IGS (Produkto nr. 40899000)

\* pasirenkami priedai