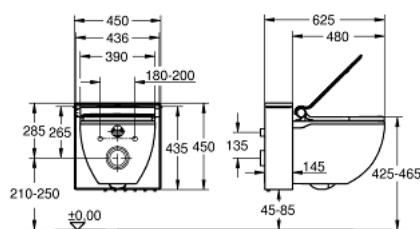


39 111 SH0 GROHE SENSIA IGS SHOWER TOILET COMPLETE SYSTEM FOR CONCEALED FLUSHING CISTERNS, WALL-HUNG



PRODUKTO APRAŠYMAS (1/2)

- Spalva: alpine white
- GROHE Hygiene decalcification program, unique 70°C hot water cleaning for entire water system, automatic shower cleaning before and after every use
- GROHE DreamSpray technology:
- separate water way for lady spray
- aerated shower spray
- oscillating spray (automatic forward and reverse motion of the spray)
- pulsating spray for massage
- adjustable spray intensity
- automatic pre- and post-rinsing of spray nozzle with fresh water
- warm water with adjustable temperature
- Other functions
- warm air dryer with adjustable temperature
- odor extraction with filter
- Duroplast WC seat and lid with soft close function
- push and turn seat control operation
- 4 programmable user profiles for remote controller
- power switch
- inside night lighting
- hidden water supply and power supply connections
- includes:
- touchscreen remote control with wall-mounted holder
- batteries for remote controller
- active carbon filter
- fixing and connecting material
- flush pipe
- installation guide, manual
- cable with system plug on device
- pressure 0.1 - 1.0 MPa (1 - 10 bar)
- nominal voltage 220-240 V AC 1400 W
- main frequency 50-60 Hz
- type of protection IPX4

Pure Freude
an Wasser



39 111 SH0 **GROHE SENSIA IGS SHOWER TOILET COMPLETE SYSTEM FOR CONCEALED FLUSHING CISTERNS, WALL-HUNG**

PRODUKTO APRAŠYMAS (2/2)

- complying with EN 1717/13077
- CE approved
- SH0: alpine white ceramic, housing, front, seat and lid

39 111 SH0 GROHE SENSIA IGS SHOWER TOILET COMPLETE SYSTEM FOR CONCEALED FLUSHING CISTERNS, WALL-HUNG



ATSARGINĖS DALYS , rugpjūčio 2018 – dabar

- 1: WC seat and lid (Produkto nr. 14913000)
- 2: Splash protection (Produkto nr. 14914000)
- 3: Operating unit (Produkto nr. 14916000)
- 4: WC-ceramic (Produkto nr. 14900000)
- 5: Remote control (Produkto nr. 14915000)
- 6: Shower unit (Produkto nr. 14904000)
- 7: Interface print (Produkto nr. 14908000)
- 8: Dryer (Produkto nr. 14905000)
- 9: Flush device (Produkto nr. 14910000)
- 10: Boiler (Produkto nr. 14902000)
- 11: Odour extraction (Produkto nr. 14909000)
- 12: Connecting pipe (Produkto nr. 14917000)
- 13: LED-print (Produkto nr. 14907000)
- 14: Electronic (Produkto nr. 14906000)
- 15: Pump (Produkto nr. 14903000)
- 16: Panel set (Produkto nr. 14911SH0)
- 17: Spray (Produkto nr. 14912000)