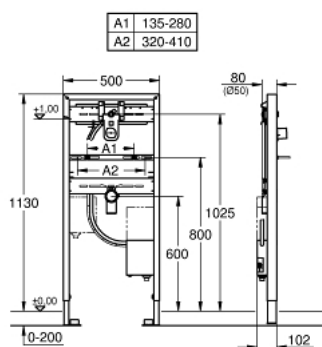
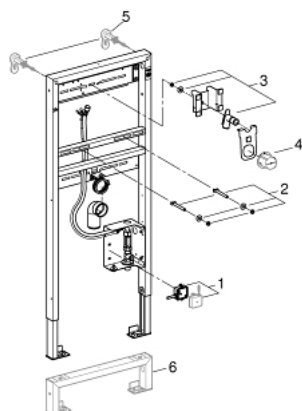


## A blue metal frame with a white control unit and a red emergency stop button, connected by a cable. The control unit is mounted on the frame, and the emergency stop button is also mounted on the frame. A cable runs from the control unit to the emergency stop button. The frame is made of blue metal bars. The control unit is white and has a red emergency stop button. The emergency stop button is red and has a green center. The cable is black and has a braided shield. The frame is standing on four legs. The control unit is mounted on the top bar of the frame. The emergency stop button is mounted on the second bar from the top. The cable runs from the control unit down to the emergency stop button. The frame is made of blue metal bars. The control unit is white and has a red emergency stop button. The emergency stop button is red and has a green center. The cable is black and has a braided shield. The frame is standing on four legs. The control unit is mounted on the top bar of the frame. The emergency stop button is mounted on the second bar from the top. The cable runs from the control unit down to the emergency stop button.

- for wall mounted fittings
- suitable for trim sets Europlus E 36 042 SD0, Essence E 36 447 000 and Eurocube E 36 442 000
- 1.13 m installation height
- for on-the-wall installations or studded walls
- powder coated steel frame, self-supporting
- for dry-cladding, completely pre-assembled
- quick adjustment, lockable
- fixing material
- wash basin fixing bolts M10 with fixing device for ceramic
- variable distance of fixing bolts
- HT-outlet bend Ø 50 mm
- seal Ø 32 mm
- pre-mounted roughing-in set with protecting block
- fire-proof pipe for laying electronic cables
- installation box with water group, stop valve and flush elbow
- connection with noise protected fitting holder 1/2"
- connecting box for mains supply 230 V
- CE approved
- for installation with pre-mixed or cold water
- for on-the-wall installation please order wall brackets 38 558 00M (sold separately)



## 38 748 002 **RAPID SL ELEMENT FOR WASH BASIN WITH ROUGHIN-IN SET FOR INFRA-RED ELECTRONIC**



**ATSARGINĖS DALYS** , rugsėjo 2016 – dabar

1: Switching power supply (Produkto nr. 42470000)

2: Threaded bolt (Produkto nr. 42247000)

3: Fitting connection (Produkto nr. 42944000)

4: Inspection shaft (Produkto nr. 42398000)

5: Wall brackets (Produkto nr. 3855800M)\*

6: Extension (Produkto nr. 38629000)\*

\* pasirenkami priedai