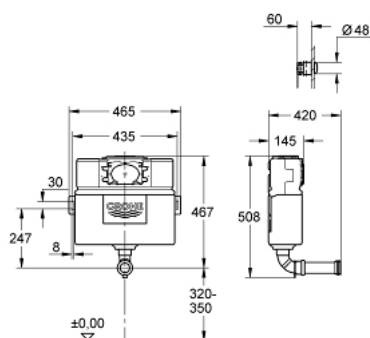


38 691 000 EAU2 WC FLUSHING CISTERN 0.82 M



PRODUKTO APRAŠYMAS

- 6 l / 3 l
- Dual Flush
- low noise filling valve
- 6 - 9 l adjustable
- concealed installation
- 0.82 m installation height
- water supply from left/right or back
- connection from left / right or back
- non-interruptible flush cycle
- front or top single 6 l only flush
- water supply from left/right or top
- low noise (group I acc. to German Noise Specification)
- insulated against condensation
- 415 x 410 x 360 mm
- with angle stop valve 1/2" and flush pipe
- 1/2" water supply connection
- angle valve 1/2"
- fixing brackets
- flush pipe
- without wall plate/actuation
- protecting block
- min. recommended static pressure 0.2 bar
- air button
- front or top actuation
- extended hose length for flexibility when positioning the actuation
- sleek and minimal styling allows the button to be fitted in any 360 degree orientation
- GROHE Water Saving - Less water, perfect flow

38 691 000 EAU2 WC FLUSHING CISTERN 0.82 M



ATSARGINÉS DALYS , spalio 2021 – dabar

1: Pneumatic push button actuation (Produkto nr. 38771000)

1.1: Push button and escutcheon (Produkto nr. 42311PI0)

1.2: Nipple (Produkto nr. 4227100M)

1.3: Tubes (Produkto nr. 42775000)

2: Discharge valve AV1 complete (Produkto nr. 42314000)

2.1: Pneumatic hose (Produkto nr. 42319000)

2.2: Seal (Produkto nr. 42310000)

2.3: Valve seat for GD2 (Produkto nr. 42315000)

3: Protective plate (Produkto nr. 42199000)

4: Wall union (Produkto nr. 43352000)

5: Connector (Produkto nr. 37119000)

6: Water connection (Produkto nr. 48561000)

7: Overflow Sleeve (Produkto nr. 43325000)

7.1: Sealing washer (Produkto nr. 0319100M)

8: Support device (Produkto nr. 42195000)

9: Filling valve (Produkto nr. 37095000)

9.1: Lever (Produkto nr. 43734000)

9.1.1: Seal (Produkto nr. 4377000M)

9.2: Valve head (Produkto nr. 43536000)

9.3: Membrane (Produkto nr. 4375800M)

9.4: Screw cap (Produkto nr. 43735000)

9.5: Valve float, 5 pcs. (Produkto nr. 4379100M)

9.6: Set of seals (Produkto nr. 43722000)*

10: Flow restrictor (Produkto nr. 42300000)*

* pasirenkami priedai