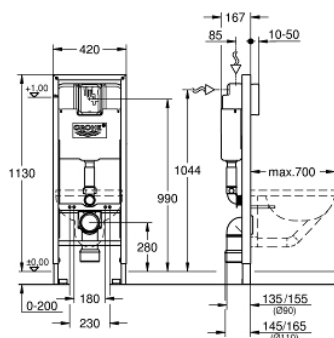


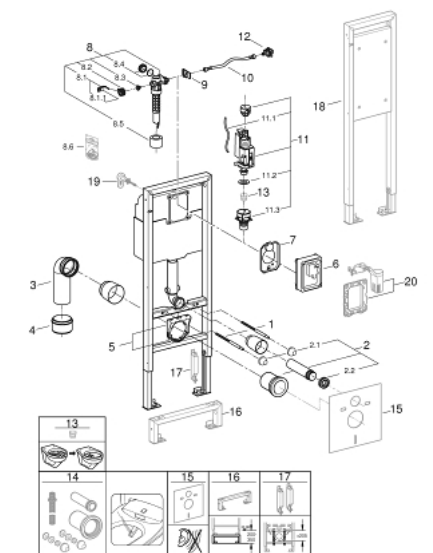
38 675 001 **RAPID SL ELEMENT FOR WC, 1.13 M INSTALLATION HEIGHT, 0.42 M WIDTH**



PRODUKTO APRAŠYMAS

- with flush cistern 6 l
- for WC bowls 70 cm projection
- for on-the-wall installations or studded walls
- powder coated steel frame, self-supporting
- for dry-cladding, completely pre-assembled
- with fixed connections
- fixing material
- TÜV approved
- 2 WC fixing bolts
- fixing device for ceramic
- distance of fixing bolts 180/230 mm
- outlet bend Ø 90 mm
- depth adjustable
- reducer Ø 90/110 mm
- inlet and outlet connecting set
- pneumatic discharge valve offering 3 modes of operation: dual flush or start/stop or single flush
- low noise (group I acc. to German Noise Specification)
- insulated against condensation
- ½" water supply connection including integrated angle valve and push fit flexible hose union
- for on-the-wall installation please order wall brackets 38 558 00M (sold separately)
- for the mounting of support rails for the disabled please order fixing element 38 559 001 (sold separately)

38 675 001 **RAPID SL ELEMENT FOR WC, 1.13 M INSTALLATION HEIGHT, 0.42 M WIDTH**



ATSARGINĖS DALYS , rugsėjo 2021 – dabar

- 1: Threaded bolt (Produkto nr. 4276400M)
- 2: WC inlet and outlet connecting set (Produkto nr. 37311K00)
- 2.1: Basin fastening (Produkto nr. 43511SH0)
- 2.2: Connector (Produkto nr. 37119000)
- 3: PP-outlet bend Ø 90 mm (Produkto nr. 42327000)
- 4: Reducer (Produkto nr. 42242000)
- 5: Support for outlet bend (Produkto nr. 42243000)
- 6: Protection cap (Produkto nr. 43944000)
- 7: Protective plate (Produkto nr. 43552000)
- 8: Filling valve (Produkto nr. 43537000)
- 8.1: Dummy plug and escutcheon cap (Produkto nr. 37125000)
- 8.2: Lever (Produkto nr. 43734000)
- 8.2.1: Seal (Produkto nr. 4377000M)
- 8.3: Valve head (Produkto nr. 43536000)
- 8.4: Membrane (Produkto nr. 4375800M)
- 8.5: Screw cap (Produkto nr. 43735000)
- 8.6: Valve float, 5 pcs. (Produkto nr. 4379100M)
- 8.7: Throttle (Produkto nr. 42356000)
- 8.8: Set of seals (Produkto nr. 43722000)*
- 9: Support device (Produkto nr. 43551000)
- 10: Hose (Produkto nr. 43349000)
- 11: Dual Flush discharge valve AV1 (Produkto nr. 66558000)
- 11.1: Pneumatic hose (Produkto nr. 42319000)
- 11.2: Seal (Produkto nr. 42310000)
- 11.3: Valve seat for GD2 (Produkto nr. 42315000)
- 12: Water Connection (Produkto nr. 48561000)
- 13: Flow restrictor (Produkto nr. 42300000)*
- 14: Retrofit kit for shower toilets Sensia Arena and IGS (Produkto nr. 40899000)*
- 15: Set for noise protection (Produkto nr. 37131000)*
- 16: Extension (Produkto nr. 38629000)*
- 17: Accessory (Produkto nr. 38779000)*
- 18: Fixing element, 1.13 m installation height (Produkto nr. 38559001)*
- 19: Wall brackets (Produkto nr. 3855800M)*
- 20: Retro-fit set (Produkto nr. 38796000)*

* pasirenkami priedai