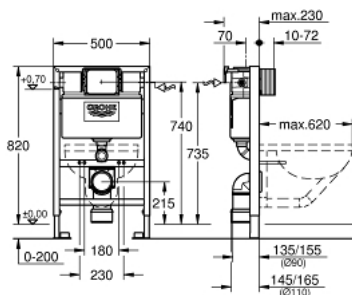


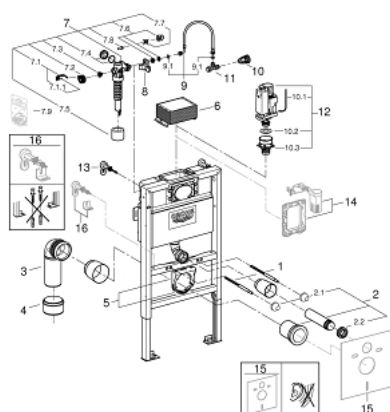
38 618 000 **RAPID SL ELEMENT FOR WC, 0.82 M INSTALLATION HEIGHT**



PRODUKTO APRAŠYMAS

- with flushing cistern 6 - 9 l
- for on-the-wall installations or studded walls
- powder coated steel frame, self-supporting
- for dry-cladding, completely pre-assembled
- with fixed connections
- quick adjustment, lockable
- fixing material
- TÜV approved
- 2 WC fixing bolts
- fixing device for ceramic
- distance of fixing bolts 180/230 mm
- outlet bend Ø 90 mm
- depth adjustable
- reducer Ø 90/110 mm
- inlet and outlet connecting set
- flushing cistern 6 - 9 l containing the following features:
 - pneumatic discharge valve offering 3 modes of operation: dual flush or start/stop or single flush
 - front or top actuation
 - water supply from left/right or back
 - low noise (group I acc. to German Noise Specification)
 - insulated against condensation
 - angle valve ½"
 - water inlet with pipe fixation
 - shortable inspection shaft incl. protection during construction phase
 - including wall brackets 38 558 00M for on-the-wall installation
 - for mounting of small flush plates please order revision shaft 40 950 000 (sold separately)
 - including adapter 38 338 000

38 618 000 **RAPID SL ELEMENT FOR WC, 0.82 M INSTALLATION HEIGHT**



ATSARGINĖS DALYS , kovo 2018 – dabar

- 1: Threaded bolt (Produkto nr. 4276400M)
- 2: WC inlet and outlet connecting set (Produkto nr. 37311K00)
- 2.1: Basin fastening (Produkto nr. 43511SH0)
- 2.2: Connector (Produkto nr. 37119000)
- 3: PP-outlet bend Ø 90 mm (Produkto nr. 42327000)
- 4: Reducer (Produkto nr. 42242000)
- 5: Support for outlet bend (Produkto nr. 42243000)
- 6: Inspection shaft for flushing cistern (Produkto nr. 42326000)
- 7: Filling valve (Produkto nr. 37095000)
- 7.1: Lever (Produkto nr. 43734000)
- 7.1.1: Seal (Produkto nr. 4377000M)
- 7.2: Valve head (Produkto nr. 43536000)
- 7.3: Membrane (Produkto nr. 4375800M)
- 7.4: Screw cap (Produkto nr. 43735000)
- 7.5: Valve float, 5 pcs. (Produkto nr. 4379100M)
- 7.6: Set of seals (Produkto nr. 43722000)*
- 8: Support device (Produkto nr. 42195000)
- 9: Overflow Sleeve (Produkto nr. 43325000)
- 9.1: Sealing washer (Produkto nr. 0319100M)
- 10: Connecting box (Produkto nr. 38338000)
- 11: Angle valve (Produkto nr. 43821000)
- 12: Discharge valve AV1 complete (Produkto nr. 42314000)
- 12.1: Pneumatic hose (Produkto nr. 42319000)
- 12.2: Seal (Produkto nr. 42310000)
- 12.3: Valve seat for GD2 (Produkto nr. 42315000)
- 13: Wall brackets (Produkto nr. 3855800M)
- 14: Retro-fit set (Produkto nr. 38796000)*
- 15: Set for noise protection (Produkto nr. 37131000)*
- 16: Xtra wall brackets, flexible placing (Produkto nr. 38733000)*

* pasirenkami priedai