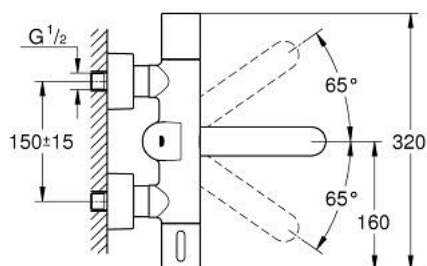
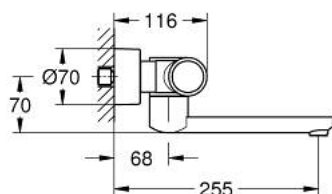


36 455 000 EUROSMART COSMOPOLITAN E SPECIAL INFRA-RED ELECTRONIC WALL BASIN MIXER WITH THERMOSTATIC TEMPERATURE CONTROL



PRODUKTO APRAŠYMAS (1/2)

- Spalva: chrome
- with infrared sensor for bi-directional communication for monitoring, configuration and service purpose
- 6 V lithium battery, type CR-P2
- battery lifetime: approx. 7 years (150 actuations a day)
- activation by hand, deactivation automatically when leaving detection zone (hand-body detection mode)
- two additional detection modes adjustable (hand-hand or body-body)
- ergonomic metal handle
- GROHE Long-Life finish
- maximum flow rate (at 3 bar): 8 l/min
- GROHE CoolTouch
- non-return valve
- dirt strainers
- GROHE SafetyPlus
- temperature scale handle with internal safety stop between 35°C and 43°C
- metal temperature safety stop
- full unmixed hot or cold water in extreme handle position for legionella sampling
- swivel cast spout
- 187 mm
- projection 255 mm
- swivel range stop at 130°, lockable
- with S-unions and with covers
- self-sealing escutcheons
- multistage battery status display
- 7 pre-set programs:
 - auto flush
 - thermal disinfection
 - cleaning mode
- additional functions and precise settings by remote control 36 407
- CE approved

Pure Freude
an Wasser

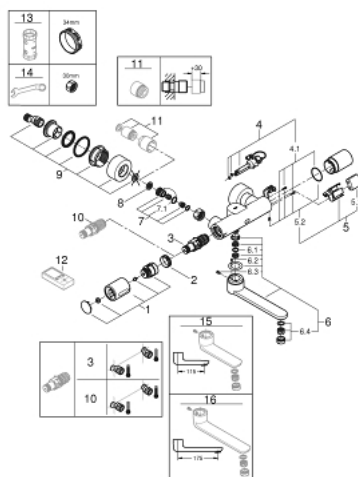


36 455 000 **EUROSMART COSMOPOLITAN E SPECIAL INFRA-RED ELECTRONIC WALL
BASIN MIXER
WITH THERMOSTATIC TEMPERATURE CONTROL**

PRODUKTO APRAŠYMAS (2/2)

- acoustic group I in accordance with DIN 4109

36 455 000 EUROSMART COSMOPOLITAN E SPECIAL INFRA-RED ELECTRONIC WALL BASIN MIXER WITH THERMOSTATIC TEMPERATURE CONTROL



ATSARGINĖS DALYS , balandžio 2018 – dabar

- 1: Temperature control handle (Produkto nr. 49124000)
- 2: Fitting ring (Produkto nr. 47743000)
- 3: Thermostatic compact cartridge 1/2" (Produkto nr. 47439000)
- 4: Solenoid valve (Produkto nr. 42424000)
- 4.1: Set of screws (Produkto nr. 42422000)
- 5: Battery housing (Produkto nr. 42425000)
- 5.1: Battery (Produkto nr. 42886000)
- 5.2: Set of screws (Produkto nr. 42422000)
- 6: Spout (Produkto nr. 42423000)
- 6.1: Sealing washer (Produkto nr. 0128500M)
- 6.2: Set of screws (Produkto nr. 46670000)
- 6.3: Laminar flow straightener (Produkto nr. 13960000)
- 7: Non-return valve (Produkto nr. 48277000)
- 7.1: O-ring $\varnothing 17 \times \varnothing 2$ (Produkto nr. 0305500M)
- 8: Dirt strainer (Produkto nr. 0726400M)
- 9: S-union (Produkto nr. 12693000)
- 10: GROHE TurboStat cartridge 1/2" (Produkto nr. 47175000)*
- 11: Extension set, 30 mm (Produkto nr. 46238000)*
- 12: Remote control (Produkto nr. 36407001)*
- 13: Socket spanner (Produkto nr. 19332000)*
- 14: Special spanner (Produkto nr. 19377000)*
- 15: Cast swivel spout (Produkto nr. 13378000)*
- 16: Cast swivel spout (Produkto nr. 13380000)*

* pasirenkami priedai