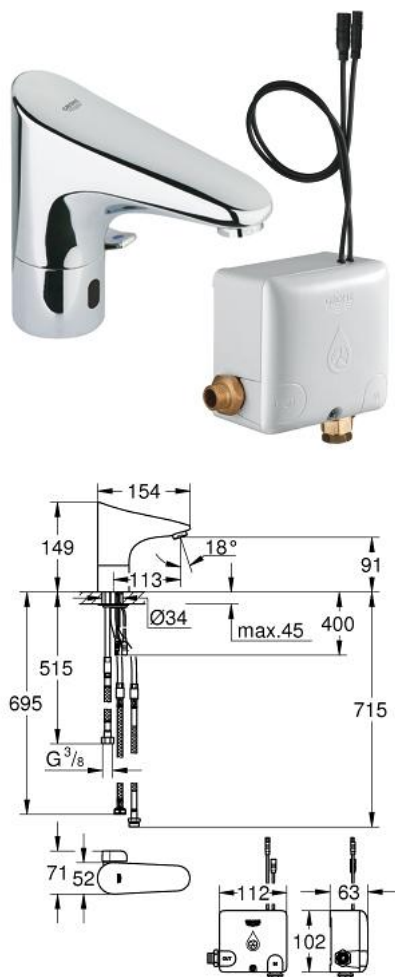


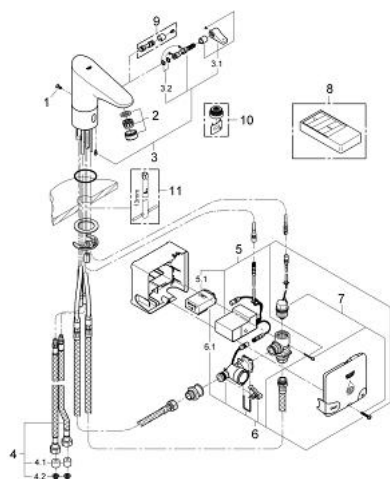
## 36 387 000 EUROPLUS E POWERBOX



### PRODUKTO APRAŠYMAS

- Spalva: chrome
- with infrared sensor for bi-directional communication for monitoring, configuration and service purpose
- including Powerbox self-generating power system
- single hole installation
- GROHE Long-Life finish
- GROHE Water Saving 6.0 l/min mousseur
- including all flexible connection hoses
- non-return valve
- dirt strainer
- rapid installation system
- Powerbox
- power generator with water turbine
- internal energy saving unit
- with use of 60 s/24 h stand-by, 260 s/100 h stand-by
- with additional backup power
- 7 pre-set programs:
  - auto flush
  - thermal disinfection
  - cleaning mode
- additional functions and precise settings by remote control 36 407

## 36 387 000 EUROPLUS E POWERBOX



**ATSARGINĖS DALYS** , balandžio 2013 – dabar

- 1: Screws (Produkto nr. 4283100M)
- 2: Mousseur (Produkto nr. 42832000)
- 3: Mixer spindle with lever (Produkto nr. 42839000)
- 3.1: Mixing lever (Produkto nr. 42838000)
- 3.2: Sealing washer (Produkto nr. 4284000M)
- 4: Connection hose (Produkto nr. 42403000)
- 4.1: Non-return valve (Produkto nr. 4240400M)
- 4.2: Filter (Produkto nr. 4241300M)
- 5: Electronic (Produkto nr. 42458000)
- 5.1: Battery housing (Produkto nr. 42393000)
- 6: Generator (Produkto nr. 42457000)
- 6.1: Battery housing (Produkto nr. 42393000)
- 7: Solenoid valve (Produkto nr. 42456000)
- 8: Infra-red remote control (Produkto nr. 36206000)\*
- 9: Hidden mixing device (Produkto nr. 36209000)\*
- 10: Mousseur (Produkto nr. 36133000)\*
- 11: Mounting wrench (Produkto nr. 19017000)\*

\* pasirenkami priedai