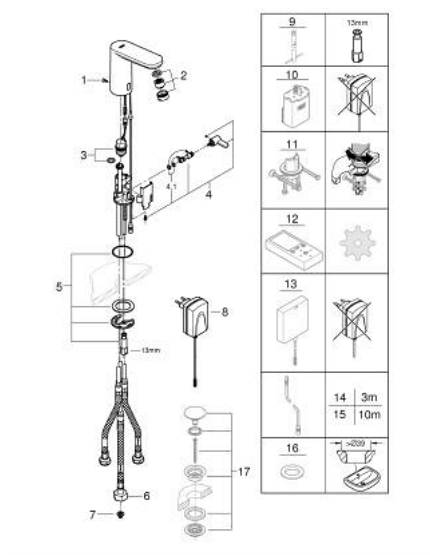


- Spalva: chrome
- with infrared sensor for bi-directional communication for monitoring, configuration and service purpose
- with plug transformer 100-230 V AC, 50-60 Hz, 6 V DC
- for open water heater
- GROHE Long-Life finish
- GROHE Water Saving - Less water, perfect flow
- maximum flow rate (at 3 bar): 5.5 l/min
- fixed built-in static flow limiter on the hose connection
- non-return valve
- dirt strainers
- flexible connection hoses
- with integrated solenoid valve
- rapid installation system
- 7 pre-set programs:
- auto flush
- thermal disinfection
- cleaning mode
- additional functions and precise settings by remote control 36 407
- CE approved
- type of protection faucet IP 59K

36 324 001 EUROSMART COSMOPOLITAN E INFRA-RED ELECTRONIC BASIN MIXER WITH MIXING DEVICE AND ADJUSTABLE TEMPERATURE LIMITER



ATSARGINĖS DALYS, balandžio 2023 – dabar

- 1: Screws (Produkto nr. 4283100M)
 - 2: Flow straightener (Produkto nr. 46162000)
 - 3: Solenoid valve (Produkto nr. 42469000)
 - 4: Mixing lever (Produkto nr. 42401000)
 - 4.1: Sealing washer (Produkto nr. 4284000M)
 - 5: Mounting set (Produkto nr. 42400000)
 - 6: Adapter with flow rate limiter (Produkto nr. 42255000)
 - 7: Filter (Produkto nr. 4241300M)
 - 8: Mains adaptor (Produkto nr. 42388000)
 - 9: Mounting wrench (Produkto nr. 19017000)*
 - 10: Battery housing (Produkto nr. 42393000)*
 - 11: Rotation lock (Produkto nr. 36276000)*
 - 12: Remote control (Produkto nr. 36407001)*
 - 13: Switch-mode power supply (Produkto nr. 36338000)*
 - 14: Power extension cable (Produkto nr. 36340000)*
 - 15: Power extension cable (Produkto nr. 36341000)*
 - 16: Escutcheon (Produkto nr. 36370000)*
 - 17: Waste set with push-open plug (Produkto nr. 65807000)*
- * pasirenkami priedai