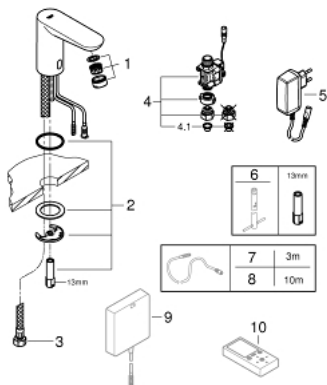


- Spalva: chrome
- with infrared sensor for bi-directional communication for monitoring, configuration and service purpose
- for cold or premixed water
- with plug transformer 100-230 V AC, 50-60 Hz, 6 V DC
- GROHE Long-Life finish
- GROHE Water Saving - Less water, perfect flow
- maximum flow rate (at 3 bar): 5 l/min
- flexible connection hoses
- dirt strainers
- external solenoid valve
- rapid installation system
- 7 pre-set programs:
- auto flush
- thermal disinfection
- cleaning mode
- additional functions and precise settings by remote control 36 407
- CE approved
- acoustic group I in accordance with DIN 4109
- type of protection faucet IP 59K

36 269 000 EUROECO COSMOPOLITAN E INFRA-RED ELECTRONIC BASIN TAP 1/2" WITHOUT TEMPERATURE CONTROL



ATSARGINĖS DALYS , rugsėjo 2015 – dabar

1: Mousseur (Produkto nr. 48159000)

2: Shank mounting kit (Produkto nr. 42389000)

3: Connection hose (Produkto nr. 46255000)

4: Solenoid valve (Produkto nr. 42390000)

4.1: Dirt strainer (Produkto nr. 42395000)

5: Mains adaptor (Produkto nr. 42388000)

6: Mounting wrench (Produkto nr. 19017000)*

7: Power extension cable (Produkto nr. 36340000)*

8: Power extension cable (Produkto nr. 36341000)*

9: Switch-mode power supply (Produkto nr. 36338000)*

10: Remote control (Produkto nr. 36407001)*

* pasirenkami priedai