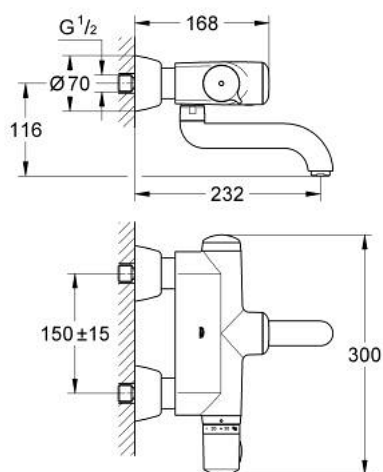


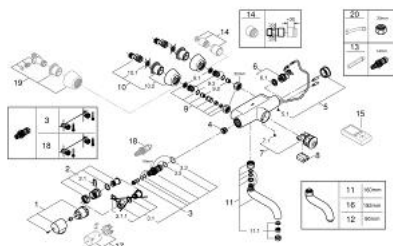
## 36 240 001 EUROPLUS E INFRA-RED ELECTRONIC WASH BASIN THERMOSTAT, 1/2"



### PRODUKTO APRAŠYMAS

- Spalva: chrome
- with infrared sensor for bi-directional communication for monitoring, configuration and service purpose
- wall mounted
- 6 V lithium battery, type CR-P2
- battery lifetime: approx. 7 years (150 actuations a day)
- 3 modi to start mixer: hand-hand, hand-body or body-body reflection
- temperature scale handle with safety stop between 35°C and 45°C
- GROHE Long-Life finish
- GROHE CoolTouch
- GROHE Water Saving - Less water, perfect flow
- laminar flow straightener 9 l/min
- non-return valve
- dirt strainers
- swivel cast spout
- 160 mm
- projection 232 mm
- swivel range stop at 130°, lockable
- multistage battery status display
- 7 pre-set programs:
  - auto flush
  - thermal disinfection
  - cleaning mode
- additional functions and precise settings by remote control 36 407
- CE approved
- acoustic group I in accordance with DIN 4109
- type of protection IP 69K

## 36 240 001 EUROPLUS E INFRA-RED ELECTRONIC WASH BASIN THERMOSTAT, 1/2"



**ATSARGINĖS DALYS** , rugsėjo 2015 – dabar

- 1: Temperature scale handle (Produkto nr. 47409000)
- 2: Stop ring (Produkto nr. 47641000)
- 2.1: Fixing clamp (Produkto nr. 0574400M)
- 3: Thermo-element 1/2" (Produkto nr. 47217000)
- 3.1: Stop ring + regulating nut (Produkto nr. 47300000)
- 3.1.1: Fixing clamp (Produkto nr. 0574400M)
- 3.2: Sealing washer Ø 21 x Ø 2 (Produkto nr. 0599900M)
- 3.3: Sealing washer Ø 24 x Ø 2 (Produkto nr. 0119600M)
- 4: Seat for thermostat (Produkto nr. 01460000)
- 5: Cap (Produkto nr. 43384000)
- 5.1: Screw (Produkto nr. 4346200M)
- 6: Solenoid valve (Produkto nr. 42323000)
- 6.1: Dirt strainer (Produkto nr. 42798000)
- 7: Cartridge (Produkto nr. 42130000)
- 7.1: Screw (Produkto nr. 4346200M)
- 8: Battery (Produkto nr. 42886000)
- 9: Screw connection (Produkto nr. 47643000)
- 9.1: Dirt strainer (Produkto nr. 0726400M)
- 9.2: Non-return valve (Produkto nr. 08565000)
- 9.3: O-ring Ø 17 x Ø 2 (Produkto nr. 0305500M)
- 10: S-union (Produkto nr. 12058000)
- 10.1: Seal (Produkto nr. 0138600M)
- 10.2: Covering escutcheon (Produkto nr. 45545000)
- 11: Spout for Europlus E thermostat (Produkto nr. 42133000)
- 11.1: Laminar flow straightener (Produkto nr. 13960000)
- 12: Spout for Europlus E thermostat (Produkto nr. 43957000)\*
- 13: Socket spanner (Produkto nr. 19070000)\*
- 14: Extension set, 30 mm (Produkto nr. 46238000)\*
- 15: Remote control for all GROHE infra-red products (Produkto nr. 36407000)\*
- 16: Spout for Europlus E thermostat (Produkto nr. 42132000)\*
- 17: Metal handle temperature control (Produkto nr. 47763000)\*
- 18: Thermoelement for changed waterways (Produkto nr. 47657000)\*
- 19: S-union, lockable (Produkto nr. 12051000)\*
- 20: Special spanner (Produkto nr. 19377000)\*

\* pasirenkami priedai