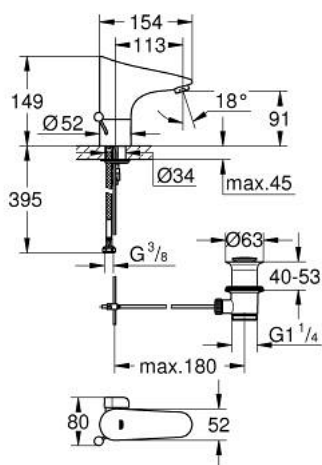


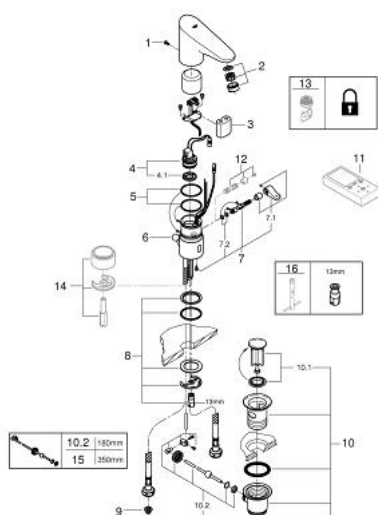
## 36 236 001 EUROPLUS E INFRA-RED ELECTRONIC BASIN MIXER 1/2" WITH MIXING DEVICE, ADJUSTABLE TEMPERATURE LIMITER AND WASTE SET



### PRODUKTO APRAŠYMAS

- Spalva: chrome
- with infrared sensor for bi-directional communication for monitoring, configuration and service purpose
- 6 V lithium battery, type CR-P2
- battery lifetime: approx. 7 years (150 actuations a day)
- GROHE Long-Life finish
- GROHE Water Saving mousseur 5.7 l/min
- pop-up waste set 1 1/4"
- flexible connection hoses
- non-return valve
- dirt strainers
- solenoid valve
- rapid installation system
- multistage battery status display
- 7 pre-set programs:
  - auto flush
  - thermal disinfection
  - cleaning mode
- additional functions and precise settings by remote control 36 407
- CE approved
- acoustic group I in accordance with DIN 4109
- type of protection faucet IP 59K

## 36 236 001 EUROPLUS E INFRA-RED ELECTRONIC BASIN MIXER 1/2" WITH MIXING DEVICE, ADJUSTABLE TEMPERATURE LIMITER AND WASTE SET



**ATSARGINĖS DALYS** , birželio 2016 – dabar

- 1: Screws (Produkto nr. 4283100M)
- 2: Mousseur (Produkto nr. 48159000)
- 3: Battery (Produkto nr. 42886000)
- 4: Solenoid valve (Produkto nr. 42229000)
- 4.1: Dirt strainer (Produkto nr. 42798000)
- 5: Sealing washer (Produkto nr. 4283600M)
- 6: Pop-up rod (Produkto nr. 42707000)
- 7: Mixer spindle with lever (Produkto nr. 42839000)
- 7.1: Mixing lever (Produkto nr. 42838000)
- 7.2: Sealing washer (Produkto nr. 4284000M)
- 8: Fixing set (Produkto nr. 42841000)
- 9: Filter (Produkto nr. 4241300M)
- 10: Waste set 1 1/4" (Produkto nr. 28910000)
- 10.1: Plug (Produkto nr. 07182000)
- 10.2: Eccentric rod (Produkto nr. 07052000)
- 11: Remote control (Produkto nr. 36407001)\*
- 13: Mousseur (Produkto nr. 36133000)\*
- 14: Socket (Produkto nr. 36210000)\*
- 15: Eccentric rod (Produkto nr. 07341000)\*
- 16: Mounting wrench (Produkto nr. 19017000)\*

\* pasirenkami priedai