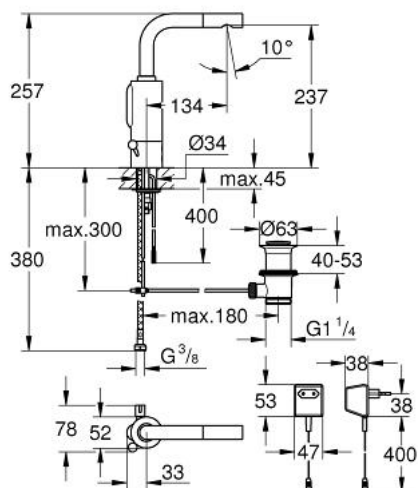


36 091 000 ESSENCE E INFRA-RED ELECTRONIC BASIN MIXER 1/2" WITH MIXING DEVICE, ADJUSTABLE TEMPERATURE LIMITER AND WASTE SET

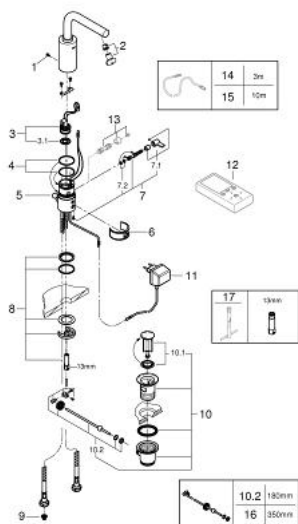


PRODUKTO APRAŠYMAS

- Spalva: chrome
- single hole installation
- with plug transformer 230 V, 50 Hz, 3,2 VA
- GROHE Long-Life finish
- GROHE Water Saving 5.0 l/min. flow limiter
- integrated mousseur
- solenoid valve integrated in housing
- flexible connection hoses
- dirt strainers
- rapid installation system
- automatic safety stop after 60 sec. (factory set)
- additional functions and precise settings by remote control 36 407
- automatic flushing after 1 or 3 days without use
- activation of permanent run for thermal disinfection for 3.5 or 11 min
- CE approved
- acoustic group I in accordance with DIN 4109
- type of protection faucet IP 59K



36 091 000 ESSENCE E INFRA-RED ELECTRONIC BASIN MIXER 1/2" WITH MIXING DEVICE, ADJUSTABLE TEMPERATURE LIMITER AND WASTE SET



ATSARGINĖS DALYS, birželio 2016 – dabar

- 1: Screws (Produkto nr. 4283100M)
- 2: Mousseur (Produkto nr. 13943000)
- 3: Solenoid valve (Produkto nr. 43066000)
- 3.1: Dirt strainer (Produkto nr. 42798000)
- 4: Sealing washer (Produkto nr. 4283600M)
- 5: Pop-up rod (Produkto nr. 42707000)
- 6: Cleaning clip (Produkto nr. 42837000)
- 7: Mixer spindle with lever (Produkto nr. 42363000)
- 7.1: Mixing lever (Produkto nr. 42364000)
- 7.2: Sealing washer (Produkto nr. 4284000M)
- 8: Fixing set (Produkto nr. 42841000)
- 9: Filter (Produkto nr. 4241300M)
- 10: Waste set 1 1/4" (Produkto nr. 28910000)
- 10.1: Plug (Produkto nr. 07182000)
- 10.2: Eccentric rod (Produkto nr. 07052000)
- 11: Plug transformer (Produkto nr. 43016000)
- 12: Remote control for all GROHE infra-red products (Produkto nr. 36407000)*
- 13: Hidden mixing device (Produkto nr. 36209000)*
- 14: Extension cable (Produkto nr. 36221000)*
- 15: Extension cable (Produkto nr. 36222000)*
- 16: Eccentric rod (Produkto nr. 07341000)*
- 17: Mounting wrench (Produkto nr. 19017000)*

* pasirenkami priedai