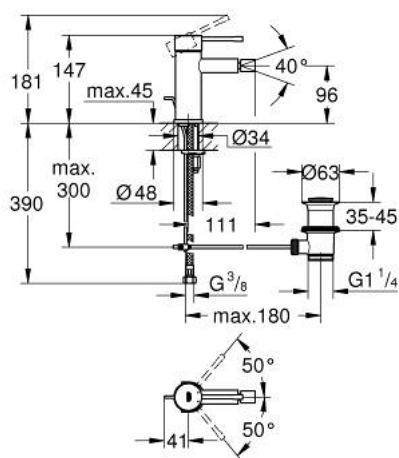


32 935 DC1 ESSENCE SINGLE-LEVER BIDET MIXER 1/2" S-SIZE

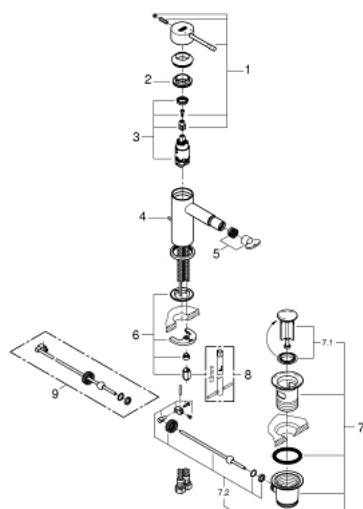


PRODUKTO APRAŠYMAS

- Spalva: supersteel
- single hole installation
- GROHE SilkMove 28 mm ceramic cartridge
- with temperature limiter
- GROHE Long-Life finish
- GROHE FastFixation Plus installation system
- ball-joint mousseur
- pop-up waste set 1 1/4"
- flexible connection hoses



32 935 DC1 ESSENCE SINGLE-LEVER BIDET MIXER 1/2" S-SIZE



ATSARGINĖS DALYS , sausio 2016 – dabar

- 1: Lever (Produkto nr. 46917DC0)
- 2: Fitting ring (Produkto nr. 46715000)
- 3: Cartridge (Produkto nr. 46580000)
- 4: Pop-up rod (Produkto nr. 46739EN0)
- 5: Mousseur (Produkto nr. 13998000)
- 6: Shank mounting kit (Produkto nr. 46645000)
- 7: Waste set 1 1/4" (Produkto nr. 28910DC0)
- 7.1: Plug (Produkto nr. 07182DC0)
- 7.2: Eccentric rod (Produkto nr. 07052000)
- 8: Mounting wrench (Produkto nr. 19017000)*
- 9: Eccentric rod (Produkto nr. 07341000)*

* pasirenkami priedai