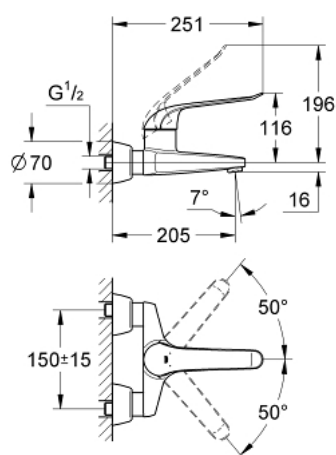
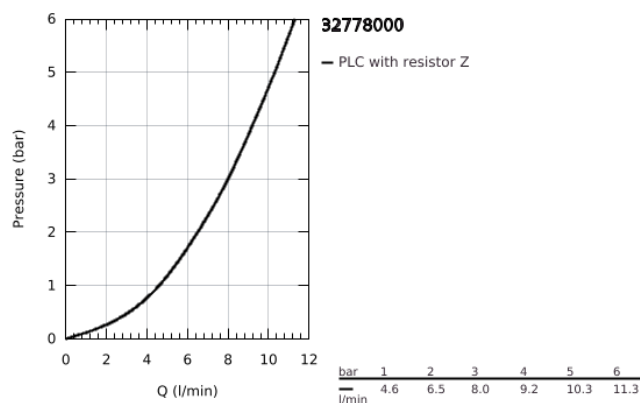


## 32 778 000 EUROECO SPECIAL SINGLE-LEVER BASIN MIXER 1/2"

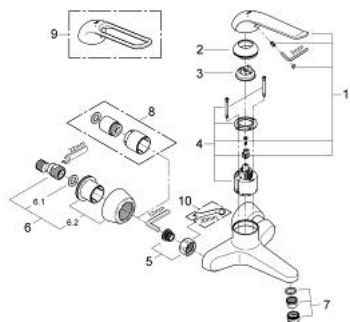


### PRODUKTO APRAŠYMAS

- Spalva: chrome
- wall mounted
- GROHE Long-Life finish
- GROHE SilkMove 46 mm ceramic cartridge
- maximum flow rate (at 3 bar): 8 l/min
- adjustable flow rate limiter
- adjustable temperature limiter
- laminar flow straightener
- cast spout
- projection 205 mm
- metal lever
- lever length 170 mm
- S-unions



## 32 778 000 EUROECO SPECIAL SINGLE-LEVER BASIN MIXER 1/2"



**ATSARGINĖS DALYS** , gegužės 2009 – dabar

- 1: Lever 170 mm (Produkto nr. 46689000)
- 2: Cap (Produkto nr. 46570000)
- 3: Temperature limiter (Produkto nr. 46375000)
- 4: Cartridge (Produkto nr. 46048000)
- 5: Screw connection 1/2" (Produkto nr. 45044000)
- 6: S-union (Produkto nr. 12058000)
- 6.1: Seal (Produkto nr. 0138600M)
- 6.2: Covering escutcheon (Produkto nr. 45545000)
- 7: Laminar flow straightener (Produkto nr. 13960000)
- 8: Extension set, 30 mm (Produkto nr. 46238000)\*
- 9: Lever 160 mm (Produkto nr. 32871000)\*
- 10: Special spanner (Produkto nr. 19377000)\*

\* pasirenkami priedai