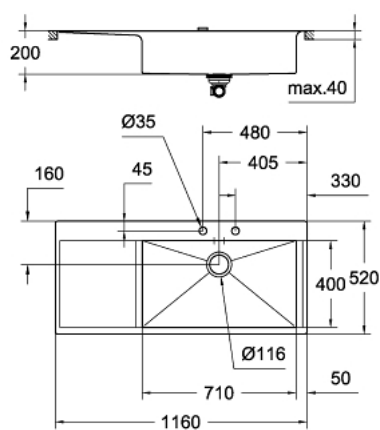


## 31 582 SD0 K1000 STAINLESS STEEL SINK WITH DRAINER



### PRODUKTO APRAŠYMAS

- Spalva: stainless steel
- model: K1000 80-S 116/52 1.0 rh
- mounting type: flush mount
- material: stainless steel AISI 304 (V2A)
- material thickness: 1 mm
- GROHE Long-Life finish
- finish: satin finish
- GROHE Whisper
- min. cabinet size: 800 mm
- dimensions: 1160 x 520 mm
- 1 bowl: 710 x 400 mm
- GROHE FastFixation installation system
- sink mountable right
- cut-out: 1148 x 508 mm
- drainer: automatic waste fitting
- accessories included: automatic waste fitting with rotary handle, waste kit, basket strainer waste, mounting set
- amount of fasteners included (flush mount): 18
- outer radius: R10, inner bowl radius: R0/R30

## 31 582 SD0 **K1000 STAINLESS STEEL SINK WITH DRAINER**

**ATSARGINĖS DALYS** , rugsėjo 2017 – dabar

1: Plug (Produkto nr. 42577SD0)

2: Cover element (Produkto nr. 42578SD0)

3: Turning handle (Produkto nr. 42574SD0)

4: Plug (Produkto nr. 42576SD0)

