

## 31 498 DC1 GROHE BLUE HOME C-SPOUT STARTER KIT WITH MONO FAUCET



### PRODUKTO APRAŠYMAS (1/2)

- Spalva: supersteel
- consisting of:
  - GROHE Blue Home Mono faucet with filter function
  - single hole installation
  - C-spout
  - push buttons for 3 types of filtered and chilled table water
  - still, medium, sparkling
- GROHE Long-Life finish
- swivel tubular spout
- swivel area 150°
- GROHE Blue Home cooler
- delivers 3 liters of chilled sparkling water per hour
- 180 Watt cooling unit, 230 V, 50 Hz
- sound level in standby 44 dB(A)
- type of protection IP 21
- CE approved
- requires ventilation holes in the bottom of the kitchen cabinet
- software set-up and monitoring of filter and CO<sub>2</sub> capacity possible via GROHE Watersystems app
- push notifications at low filter resp. CO<sub>2</sub> capacity
- with Bluetooth® 4.0\* and WIFI interface for wireless data communication
- for Apple\*\* and Android devices
- Bluetooth range (max. 10 m) varies depending on used materials and walls between transmitter and receiver
- GROHE Blue filter S-Size and filter head with flexible water hardness adjustment for regions with water hardness of more than 9° dKH
- for regions with water hardness below 9° dKH please order activated carbon filter 40 547 001
- compatible with GROHE Blue filter S-Size, M-Size, GROHE Blue activated carbon filter, GROHE Blue Ultrasafe filter and GROHE Blue magnesium+ filter
- GROHE Blue 425 g CO<sub>2</sub> bottle

Pure Freude  
an Wasser

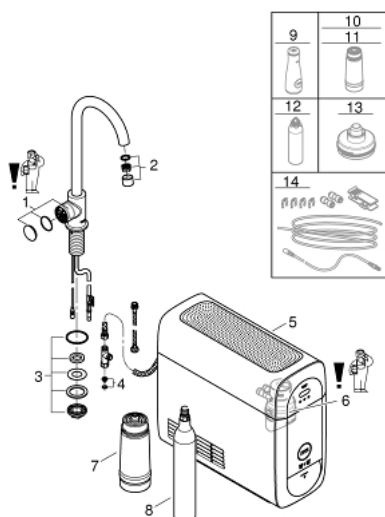


## 31 498 DC1 GROHE BLUE HOME C-SPOUT STARTER KIT WITH MONO FAUCET

### PRODUKTO APRAŠYMAS (2/2)

- System requirements Apple iPhone with iOS 14.0 or higher System requirements Android smart phone with Android 10.0 or higher Mobile devices and GROHE Watersystems App\*\*\* are not included in delivery and have to be ordered separately via an authorised Apple store/store/iTunes or Google Play store.\* The Bluetooth word mark and logos are registered trademarks owned by Bluetooth SIG, Inc. and any use of such marks by Grohe AG is under license. Other trademarks and trade names are those of their respective owners.\*\* Apple, the Apple logo, iPod, iPod Touch, iPhone and iTunes are trademarks of Apple Inc., registered in the U.S. and other countries. Apple is not responsible for the function of this device or its compliance with safety and regulatory standards.\*\*\* Available for free via iTunes app or Google Play store.
- This product includes an article which is declared as a hazardous substance. Find more information in the safety data sheet. You can download the safety data at: [www.grohe.com/safety-data-sheets/](http://www.grohe.com/safety-data-sheets/)

## 31 498 DC1 GROHE BLUE HOME C-SPOUT STARTER KIT WITH MONO FAUCET



ATSARGINĖS DALYS , balandžio 2017 – dabar

- 1: Operating unit (Produkto nr. 46958DC0)
- 2: Mousseur (Produkto nr. 46895DC0)
- 3: Screw coupling (Produkto nr. 48201000)
- 4: Dirt strainer (Produkto nr. 47576000)
- 5: Cooler (Produkto nr. 40711001)
- 6: Filter head (Produkto nr. 48344000)
- 7: Filter S-Size (Produkto nr. 40404001)
- 8: Starter kit 425 g CO<sub>2</sub> bottles (4 pieces) (Produkto nr. 40422000)
- 9: Glass carafe (Produkto nr. 40405000)\*
- 10: Activated carbon filter (Produkto nr. 40547001)\*
- 11: Magnesium+ filter (Produkto nr. 40691001)\*
- 12: Cleaning cartridge (Produkto nr. 40434001)\*
- 13: Cleaning cartridge adapter (Produkto nr. 40694000)\*
- 14: Extension set (Produkto nr. 40843000)\*

\* pasirenkami priedai