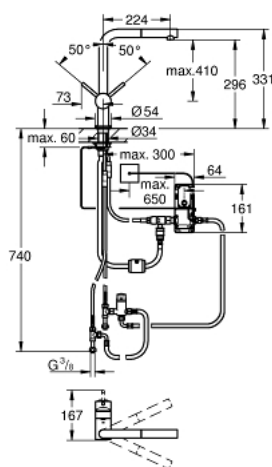


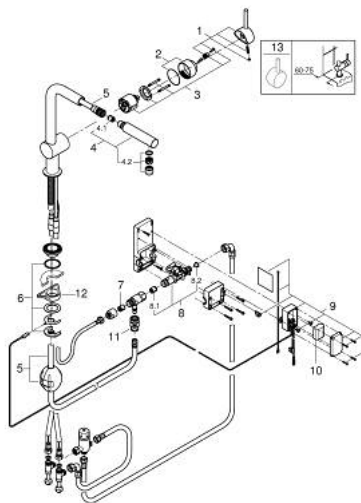
31 360 DC1 MINTA TOUCH ELECTRONIC SINGLE-LEVER SINK MIXER 1/2"



PRODUKTO APRAŠYMAS

- Spalva: supersteel
- L-spout
- single hole installation
- Touch: activation of water via skin contact
- battery supply 6 V lithium-battery, type CR-P2
- CE approved
- solenoid valve
- fixed value mixing valve
- automatic safety stop after 60 sec. (factory set)
- type of protection IP 44
- GROHE SilkMove 46 mm ceramic cartridge
- pull-out mousseur
- automatic return to mousseur
- adjustable flow rate limiter
- swivel tubular spout
- swivel area 360°
- protected against backflow
- flexible connection hoses
- rapid installation system
- maximum flow rate (at 3 bar): 10 l/min

31 360 DC1 MINTA TOUCH ELECTRONIC SINGLE-LEVER SINK MIXER 1/2"



ATSARGINĖS DALYS , rugsėjo 2023 – dabar

- 1: Lever (Produkto nr. 46015DC0)
- 2: Cap (Produkto nr. 46025DC0)
- 3: Cartridge (Produkto nr. 46048000)
- 4: Pull out spray (Produkto nr. 46858DC0)
- 4.1: Non-return valve (Produkto nr. 08565000)
- 4.2: Mousseur (Produkto nr. 13967DC0)
- 5: Shower hose (Produkto nr. 48293000)
- 6: Shank mounting kit (Produkto nr. 46345000)
- 7: Non-return valve (Produkto nr. 08565000)
- 8: Solenoid valve (Produkto nr. 48213000)
- 8.1: Non-return valve (Produkto nr. 08565000)
- 8.2: Dirt strainer (Produkto nr. 42395000)
- 9: Control unit (Produkto nr. 48214000)
- 10: Battery (Produkto nr. 42886000)
- 11: Quick coupling (Produkto nr. 46338000)
- 12: Support plate (Produkto nr. 05334000)
- 13: Lever (Produkto nr. 40684DC0)*

* pasirenkami priedai