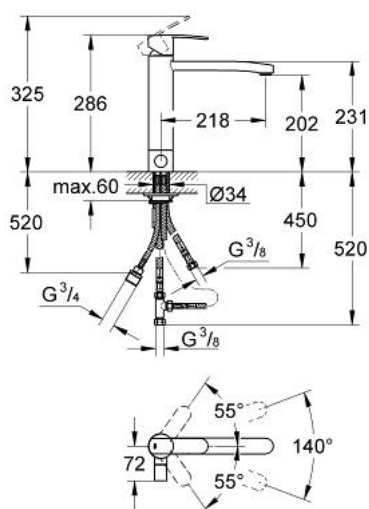


## 31 317 000 **WAVE COSMOPOLITAN SINGLE-LEVER SINK MIXER 1/2"**

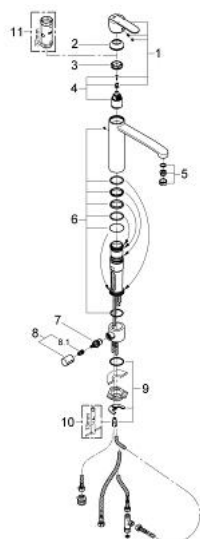


### PRODUKTO APRAŠYMAS

- Spalva: chrome
- medium spout
- integrated stop valve
- single hole installation
- GROHE SilkMove 35 mm ceramic cartridge
- GROHE Long-Life finish
- adjustable flow rate limiter
- swivel tubular spout
- swivel area 140°
- mousseur
- flexible connection hoses
- GROHE FastFixation installation system



## 31 317 000 **WAVE COSMOPOLITAN SINGLE-LEVER SINK MIXER 1/2"**



**ATSARGINĖS DALYS** , sausio 2013 – dabar

- 1: lever (Produkto nr. 46821000)
- 2: Cap (Produkto nr. 46492000)
- 3: Screw ring (Produkto nr. 46815000)
- 4: Cartridge (Produkto nr. 46374000)
- 5: Mousseur (Produkto nr. 13929000)
- 6: Seal kit (Produkto nr. 46760000)
- 7: Ceramic cartridge (Produkto nr. 46318000)
- 8: Handle for shut-off valve (Produkto nr. 46767000)
- 8.1: Snap insert (Produkto nr. 0538600M)
- 9: Shank mounting kit (Produkto nr. 46249000)
- 10: Mounting wrench (Produkto nr. 19017000)\*
- 11: Socket spanner (Produkto nr. 19332000)\*

\* pasirenkami priedai