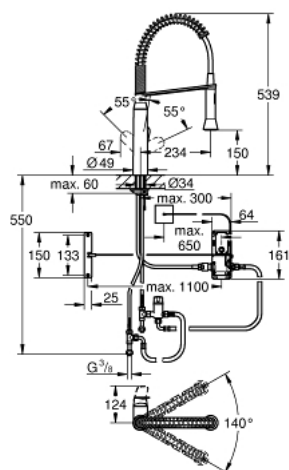


30 312 000 K7 FOOT CONTROL ELECTRONIC SINGLE-LEVER SINK MIXER 1/2"

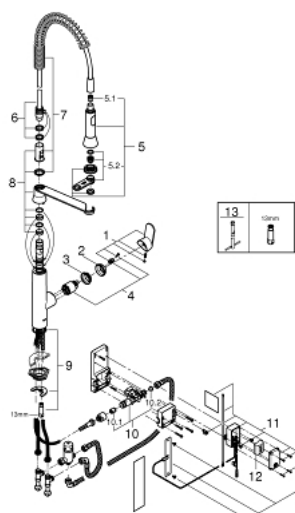


PRODUKTO APRAŠYMAS

- Spalva: chrome
- medium spout
- Foot control: activation of water via contact with sensor
- battery supply 6 V lithium-battery, type CR-P2
- CE approved
- solenoid valve
- fixed value mixing valve
- automatic safety stop after 60 sec. (factory set)
- type of protection IP 44
- GROHE Long-Life finish
- GROHE SilkMove 35 mm ceramic cartridge
- professional spray
- diverter: mousseur/SpeedClean shower jet
- automatic return to mousseur
- adjustable flow rate limiter
- swivel tubular spout
- swivel area 360°
- protected against backflow
- flexible connection hoses
- rapid installation system



30 312 000 K7 FOOT CONTROL ELECTRONIC SINGLE-LEVER SINK MIXER 1/2"



ATSARGINĖS DALYS , liepos 2015 – dabar

- 1: Lever (Produkto nr. 46927000)
 - 2: Cap (Produkto nr. 46116000)
 - 3: Screw coupling (Produkto nr. 46460000)
 - 4: Cartridge (Produkto nr. 46374000)
 - 5: Pull out spray (Produkto nr. 46731000)
 - 5.1: Non-return valve (Produkto nr. 08565000)
 - 5.2: Mousseur (Produkto nr. 46711000)
 - 6: Shower hose (Produkto nr. 46871000)
 - 7: Spring (Produkto nr. 46873SD0)
 - 8: holder pull out spray (Produkto nr. 46734000)
 - 9: Shank mounting kit (Produkto nr. 46671000)
 - 10: Solenoid valve (Produkto nr. 48213000)
 - 10.1: Non-return valve (Produkto nr. 08565000)
 - 10.2: Dirt strainer (Produkto nr. 42395000)
 - 11: Control unit (Produkto nr. 48304000)
 - 12: Battery (Produkto nr. 42886000)
 - 13: Mounting wrench (Produkto nr. 19017000)*
- * pasirenkami priedai