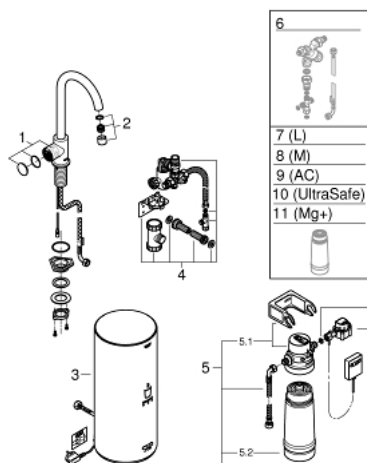


- Spalva: chrome
- consisting of:
- GROHE Red Mono pillar tap
- single hole installation
- C-spout
- GROHE ChildLock push buttons for boiling water
- TÜV certified triple electronic safeguards against accidental activation of boiling water
- GROHE Long-Life finish
- insulated tubular spout
- swivel area 150°
- connection for GROHE Red boiler
- GROHE Red boiler L size
- reservoir for boiling and hot water
- 5.5 liter 100° C boiling water
- 7 liter total capacity
- required inlet pressure: 1-7 bar
- with flexible connection hose and outlet for boiling water
- CE approved
- power supply 230 V 50 Hz
- power consumption 2100 W
- standby power consumption 15 W
- energy efficiency class A
- GROHE Blue S-Size filter starter set
- for protection of the boiler from limescale
- Capacity 600 L at 20° dKH
- flow rate measuring unit

30 080 001 GROHE RED MONO PILLAR TAP AND L SIZE BOILER



ATSARGINĖS DALYS , rugpjūčio 2013 – dabar

- 1: Operating unit (Produkto nr. 46997000)
- 2: Mousseur (Produkto nr. 13999000)
- 3: Boiler Size L (Produkto nr. 40831001)
- 4: Safety group (Produkto nr. 48371000)
- 5: S-size filter starter set (Produkto nr. 40438001)
- 5.1: Filter head (Produkto nr. 64508001)
- 5.2: Filter S-Size (Produkto nr. 40404001)
- 6: External mixing valve for GROHE Red (Produkto nr. 40841001)*
- 7: Filter L-Size (Produkto nr. 40412001)*
- 8: Filter M-Size (Produkto nr. 40430001)*
- 9: Activated carbon filter (Produkto nr. 40547001)*
- 10: UltraSafe filter (Produkto nr. 40575001)*
- 11: Magnesium+ filter (Produkto nr. 40691001)*

* pasirenkami priedai