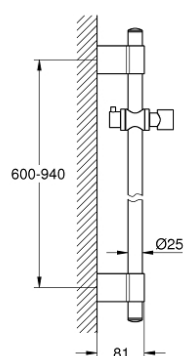


## 28 819 EN1 RAINSHOWER SHOWER RAIL, 900 MM

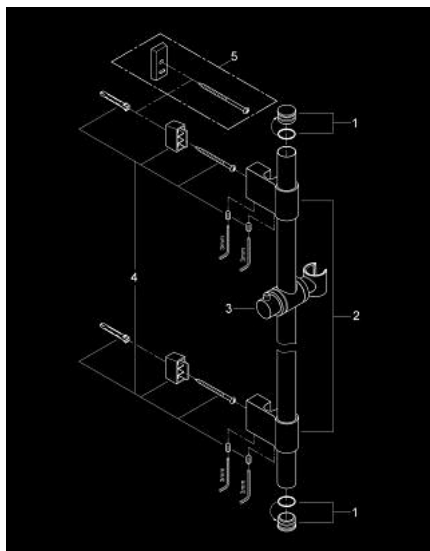


### PRODUKTO APRAŠYMAS

- Spalva: brushed nickel
- with wall holders made of metal
- glide element and swivel holder
- GROHE FastFixation Plus (adjustable distance between wall shower holders for adaption to existing drillings)
- GROHE Long-Life finish



## 28 819 EN1 RAINSHOWER SHOWER RAIL, 900 MM



**ATSARGINĖS DALYS** , rugsėjo 2009 – dabar

1: Cover cap (Produkto nr. 45922EN0)

2: Shower bar holder (Produkto nr. 06667ENM)

3: Glide element (Produkto nr. 06765EN0)

4: Fixing set (Produkto nr. 45403000)

5: Compensation disc (Produkto nr. 45914XE0)\*

\* pasirenkami priedai