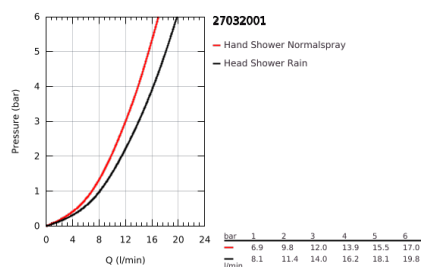
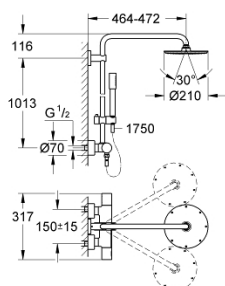


27 032 001 RAINSHOWER SYSTEM 210 SHOWER SYSTEM WITH THERMOSTAT FOR WALL MOUNTING

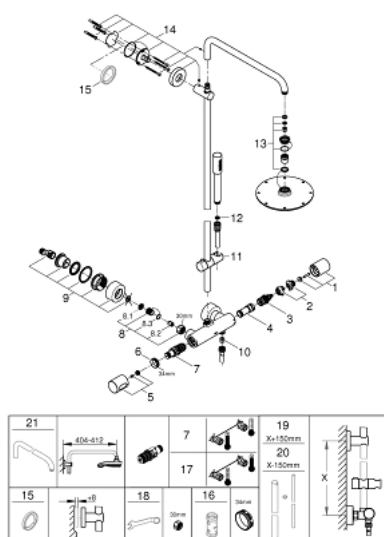


PRODUKTO APRAŠYMAS

- Spalva: chrome
- consisting of:
 - horizontal swivable 450 mm shower arm
 - exposed thermostat with Aquadimmer function
 - allows change between:
 - Rainshower Cosmopolitan 210 metal head shower
 - with ball joint
 - rotation angle $\pm 15^\circ$
 - metal stick hand shower
 - adjustable in height with gliding element
 - metal shower hose 1750 mm
- GROHE TurboStat compact cartridge with wax thermoelement
- GROHE SafeStop at 38°C
- GROHE SafeStop Plus optional temperature limiter at 43°C included
- GROHE CoolTouch no risk of scalding
- GROHE DreamSpray perfect spray pattern
- GROHE Long-Life finish
- SpeedClean anti-lime system
- suitable for instantaneous heaters from 18 kW/h
- minimum flow rate 7 l/min.



27 032 001 RAINSHOWER SYSTEM 210 SHOWER SYSTEM WITH THERMOSTAT FOR WALL MOUNTING



ATSARGINĖS DALYS , gegužės 2016 – dabar

- 1: Aquadimmer handle (Produkto nr. 47804000)
- 2: Stop (Produkto nr. 47723000)
- 3: Aquadimmer (Produkto nr. 47364000)
- 4: Water flow (Produkto nr. 47887000)
- 5: Temperature scale handle (Produkto nr. 47811000)
- 6: Fitting ring (Produkto nr. 47743000)
- 7: Thermostatic compact cartridge 1/2" (Produkto nr. 47439000)
- 8: Non-return valve (Produkto nr. 47189000)
- 8.1: Dirt strainer (Produkto nr. 0726400M)
- 8.2: Non-return valve (Produkto nr. 08565000)
- 8.3: O-ring $\varnothing 17 \times \varnothing 2$ (Produkto nr. 0305500M)
- 9: S-union (Produkto nr. 12693000)
- 10: Non-return valve (Produkto nr. 08565000)
- 11: Glide element (Produkto nr. 12140000)
- 12: Dirt strainer (Produkto nr. 0700200M)
- 13: Spare part set (Produkto nr. 45933000)
- 14: Shower bar holder (Produkto nr. 48279000)
- 15: Compensation disc (Produkto nr. 27180000)*
- 16: Socket spanner (Produkto nr. 19332000)*
- 17: GROHE TurboStat cartridge 1/2" (Produkto nr. 47175000)*
- 18: Special spanner (Produkto nr. 19377000)*
- 19: Shower system pipe for retrofitting (Produkto nr. 48053000)*
- 20: Shower system pipe for retrofitting (Produkto nr. 48054000)*
- 21: Shower arm for shower systems (Produkto nr. 14047000)*

* pasirenkami priedai