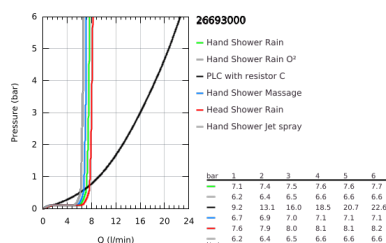
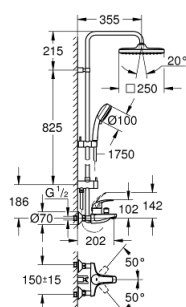


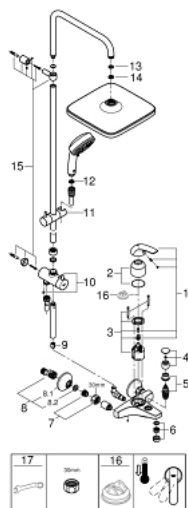
26 693 000 TEMPESTA COSMOPOLITAN SYSTEM 250 CUBE SHOWER SYSTEM WITH SINGLE LEVER BATH MIXER FOR WALL MOUNTING



PRODUKTO APRAŠYMAS

- Spalva: chrome
- with short shower rail for installation in showers
- consisting of:
 - horizontal 355 mm shower arm
 - exposed single-lever bath mixer with diverter handle
 - allows change between:
 - head shower Tempesta 250 Cube (26 685)
 - spray pattern:
 - Rain
 - head shower with white rear cover
 - with ball joint
 - rotation angle $\pm 10^\circ$
- GROHE Water Saving 9.5 l/min flow limiter
- bath inlet
- separate diverter for hand shower
- hand shower Tempesta Cosmopolitan 100 (27 575)
- 4 spray patterns:
 - GROHE Rain O2, Rain, Massage, Jet
 - GROHE Water Saving 9.5 l/min flow limiter
 - adjustable in height with gliding element
- Rotaflex TwistStop shower hose 1.750 mm 1/2" x 1/2" (28 410)
- GROHE Water Saving - Less water, perfect flow
- GROHE SilkMove 46 mm ceramic cartridge
- GROHE DreamSpray perfect spray pattern
- GROHE Long-Life finish
- SpeedClean anti-lime system
- Inner WaterGuide for a longer life
- TwistStop to prevent hose from twisting
- suitable for instantaneous heaters from 18 kW/h
- minimum flow rate 7 l/min.
- min. recommended pressure 1.0 bar
- professional edition

26 693 000 TEMPESTA COSMOPOLITAN SYSTEM 250 CUBE SHOWER SYSTEM WITH SINGLE LEVER BATH MIXER FOR WALL MOUNTING



ATSARGINĖS DALYS , vasario 2019 – dabar

- 1: Lever (Produkto nr. 46700000)
- 2: Cap (Produkto nr. 46578000)
- 3: Cartridge (Produkto nr. 46048000)
- 4: Diverter knob (Produkto nr. 46571000)
- 5: Diverter (Produkto nr. 08915000)
- 6: Mousseur (Produkto nr. 13952000)
- 7: Screw connection 1/2" (Produkto nr. 45044000)
- 8: S-union (Produkto nr. 12075000)
- 8.1: Seal (Produkto nr. 0138600M)
- 8.2: Escutcheon (Produkto nr. 0221000M)
- 9: Non-return valve (Produkto nr. 08565000)
- 10: Diverter (Produkto nr. 46877000)
- 11: Glide element (Produkto nr. 46876000)
- 12: Dirt strainer (Produkto nr. 0700200M)
- 13: Fibre seal Ø 18,5 x Ø 12 x 2 (Produkto nr. 0138900M)
- 14: Dirt strainer (Produkto nr. 48007000)
- 15: Mounting set (Produkto nr. 46878000)
- 16: Temperature limiter (Produkto nr. 46375000)*
- 17: Special spanner (Produkto nr. 19377000)*

* pasirenkami priedai