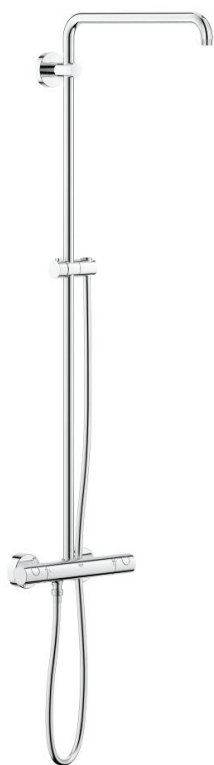
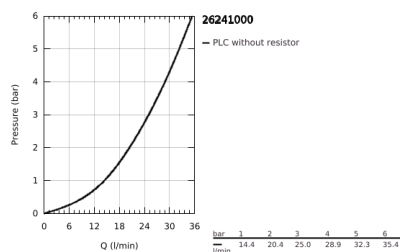
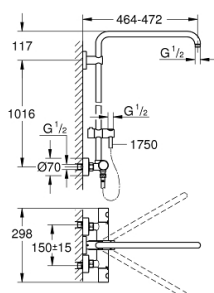


## 26 241 000 EUPHORIA SYSTEM SHOWER SYSTEM WITH THERMOSTAT FOR WALL MOUNTING

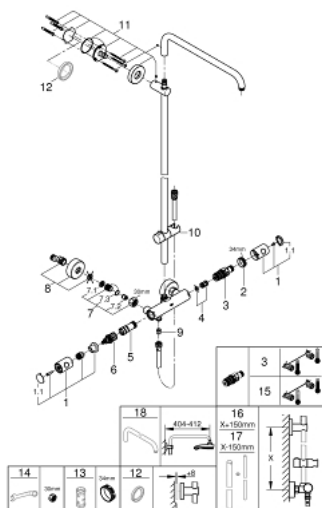


### PRODUKTO APRAŠYMAS

- Spalva: chrome
- consisting of:
  - horizontal swivable 450 mm shower arm
  - exposed thermostat with Aquadimmer function
  - gliding element
  - Silverflex shower hose 1750 mm 1/2" x 1/2" (28 388)
  - GROHE TurboStat compact cartridge with wax thermoelement
  - GROHE SafeStop at 38°C
  - GROHE SafeStop Plus optional temperature limiter at 43°C included
  - GROHE Long-Life finish
  - Inner WaterGuide for a longer life
  - TwistStop to prevent hose from twisting
  - suitable for instantaneous heaters from 18 kW/h
  - minimum flow rate 7 l/min.
  - optional upgrade: GROHE EasyReach tray (26 362)



## 26 241 000 EUPHORIA SYSTEM SHOWER SYSTEM WITH THERMOSTAT FOR WALL MOUNTING



**ATSARGINĖS DALYS** , liepos 2017 – dabar

- 1: Metal handle 1/2" (Produkto nr. 47984000)
- 1.1: Cover cap (Produkto nr. 6458500M)
- 2: Fitting ring (Produkto nr. 47743000)
- 3: Thermostatic compact cartridge 1/2" (Produkto nr. 47439000)
- 4: Buffer (Produkto nr. 47398000)
- 5: Water flow (Produkto nr. 47751000)
- 6: Aquadimmer (Produkto nr. 12433000)
- 7: Non-return valve (Produkto nr. 47189000)
- 7.1: Dirt strainer (Produkto nr. 0726400M)
- 7.2: Non-return valve (Produkto nr. 08565000)
- 7.3: O-ring  $\varnothing 17 \times \varnothing 2$  (Produkto nr. 0305500M)
- 8: S-union (Produkto nr. 12662000)
- 9: Non-return valve (Produkto nr. 08565000)
- 10: Glide element (Produkto nr. 12140000)
- 11: Shower bar holder (Produkto nr. 48279000)
- 12: Compensation disc (Produkto nr. 27180000)\*
- 13: Socket spanner (Produkto nr. 19332000)\*
- 14: Special spanner (Produkto nr. 19377000)\*
- 15: GROHE TurboStat cartridge 1/2" (Produkto nr. 47175000)\*
- 16: Shower system pipe for retrofitting (Produkto nr. 48053000)\*
- 17: Shower system pipe for retrofitting (Produkto nr. 48054000)\*
- 18: Shower arm for shower systems (Produkto nr. 14047000)\*

\* pasirenkami priedai