

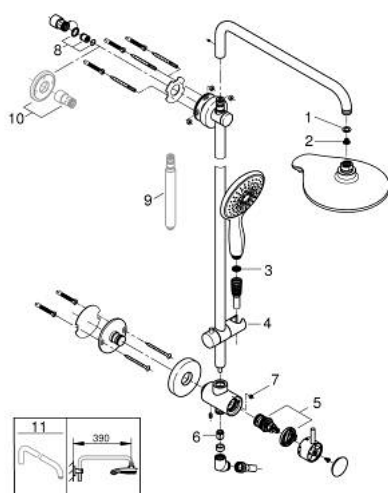
26 126 000 **RETRO-FIT 190 SHOWER SYSTEM WITH DIVERTER FOR WALL MOUNTING**



PRODUKTO APRAŠYMAS

- Spalva: chrome
- consisting of:
 - horizontal swivable 450 mm shower arm
 - built-in diverter allows change between:
 - head shower 4+ sprays (27 767)
 - GROHE Rain O², Rain, Bokoma Spray, Jet
 - with ball joint
 - rotation angle $\pm 15^\circ$
 - hand shower 4+ sprays (27 673)
 - GROHE Rain O², Rain, Bokoma Spray, Jet
 - adjustable in height with gliding element
 - metal shower hose 1500 mm (28 417)
 - angle adapter
 - GROHE Water Saving 9.5 l/min flow limiter
 - GROHE Water Saving - Less water, perfect flow
 - GROHE DreamSpray perfect spray pattern
 - GROHE Long-Life finish
 - SpeedClean anti-lime system
 - rotation cone for TwistStop-function
 - Inner WaterGuide for a longer life
 - suitable for instantaneous heaters from 18 kW/h
 - protected against backflow

26 126 000 RETRO-FIT 190 SHOWER SYSTEM WITH DIVERTER FOR WALL MOUNTING



ATSARGINĖS DALYS , balandžio 2017 – dabar

- 1: Fibre seal Ø 18,5 x Ø 12 x 2 (Produkto nr. 01389000)
- 2: Dirt strainer (Produkto nr. 0676800M)
- 3: Dirt strainer (Produkto nr. 0700200M)
- 4: Glide element (Produkto nr. 12140000)
- 5: Diverter (Produkto nr. 48058000)
- 6: Non-return valve (Produkto nr. 08565000)
- 7: Flow limiter (Produkto nr. 48160000)
- 8: non-return valves (Produkto nr. 48183000)
- 9: Retro-Fit 6" Height Extension (Produkto nr. 26464000)*
- 10: Compensation disc (Produkto nr. 26030000)*
- 11: Shower arm for shower systems (Produkto nr. 14047000)*

* pasirenkami priedai