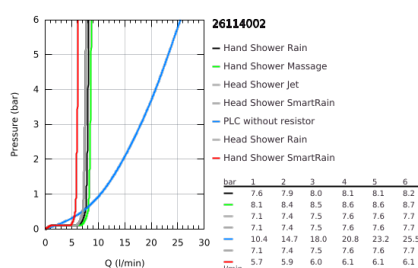
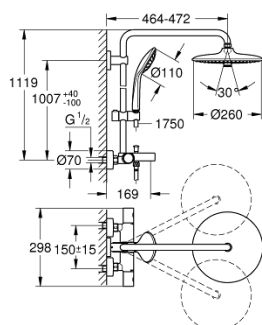


## 26 114 002 EUPHORIA SYSTEM 260 SHOWER SYSTEM WITH BATH THERMOSTAT FOR WALL MOUNTING



### PRODUKTO APRAŠYMAS (1/2)

- Spalva: chrome
- with short shower rail for installation in showers
- consisting of:
  - horizontal swivable 450 mm shower arm
  - exposed thermostat with Aquadimmer function
- allows change between:
  - head shower Euphoria 260 (26 455)
- 3 spray patterns:
  - Rain, SmartRain, Jet
- with ball joint
- rotation angle  $\pm 15^\circ$
- bath inlet
- separate diverter for hand shower
- hand shower Euphoria 110 Massage (27 221 000)
- 3 spray patterns:
  - Rain, Massage, SmartRain
- maximum flow rate (at 3 bar): 16 l/min
- adjustable in height with gliding element
- Silverflex shower hose 1750 mm 1/2" x 1/2" (28 388)
- distance between thermostat and upper bracket: 1007 mm
- GROHE TurboStat compact cartridge with wax thermoelement
- GROHE SafeStop at 38°C
- GROHE SafeStop Plus optional temperature limiter at 43°C included
- GROHE DreamSpray perfect spray pattern
- GROHE Long-Life finish
- GROHE SprayDimmer (Stepless flow rate reduction)
- GROHE Water Saving - Less water, perfect flow
- GROHE FastFixation upper bracket adjustable
- Inner WaterGuide for a longer life
- SpeedClean anti-lime system
- TwistStop to prevent hose from twisting
- suitable for instantaneous heaters from 18 kW/h
- minimum flow rate 5 l/min.

Pure Freude  
an Wasser

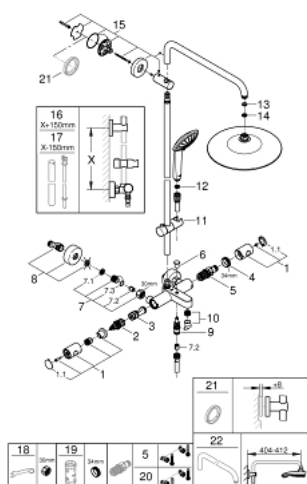


## 26 114 002 **EUPHORIA SYSTEM 260 SHOWER SYSTEM WITH BATH THERMOSTAT FOR WALL MOUNTING**

### **PRODUKTO APRAŠYMAS** (2/2)

- professional edition

## 26 114 002 EUPHORIA SYSTEM 260 SHOWER SYSTEM WITH BATH THERMOSTAT FOR WALL MOUNTING



**ATSARGINĖS DALYS** , sausio 2020 – dabar

- 1: Metal handle 1/2" (Produkto nr. 47984000)
- 1.1: Cover cap (Produkto nr. 6458500M)
- 2: Aquadimmer (Produkto nr. 47364000)
- 3: Water flow (Produkto nr. 47887000)
- 4: Fitting ring (Produkto nr. 47743000)
- 5: Thermostatic compact cartridge 1/2" (Produkto nr. 47439000)
- 6: Diverter knob (Produkto nr. 65648000)
- 7: Non-return valve (Produkto nr. 47189000)
- 7.1: Dirt strainer (Produkto nr. 0726400M)
- 7.2: Non-return valve (Produkto nr. 08565000)
- 7.3: O-ring  $\varnothing 17 \times \varnothing 2$  (Produkto nr. 0305500M)
- 8: S-union (Produkto nr. 12662000)
- 9: Diverter (Produkto nr. 65655000)
- 10: Mousseur (Produkto nr. 13926000)
- 11: Glide element (Produkto nr. 12140000)
- 12: Dirt strainer (Produkto nr. 0700200M)
- 13: Fibre seal  $\varnothing 18,5 \times \varnothing 12 \times 2$  (Produkto nr. 0138900M)
- 14: Dirt strainer (Produkto nr. 48007000)
- 15: Shower bar holder (Produkto nr. 48279000)
- 16: Shower system pipe for retrofitting (Produkto nr. 48514000)\*
- 17: Shower system pipe for retrofitting (Produkto nr. 48515000)\*
- 18: Special spanner (Produkto nr. 19377000)\*
- 19: Socket spanner (Produkto nr. 19332000)\*
- 20: GROHE TurboStat cartridge 1/2" (Produkto nr. 47175000)\*
- 21: Compensation disc (Produkto nr. 27180000)\*
- 22: Shower arm for shower systems (Produkto nr. 14047000)\*

\* pasirenkami priedai