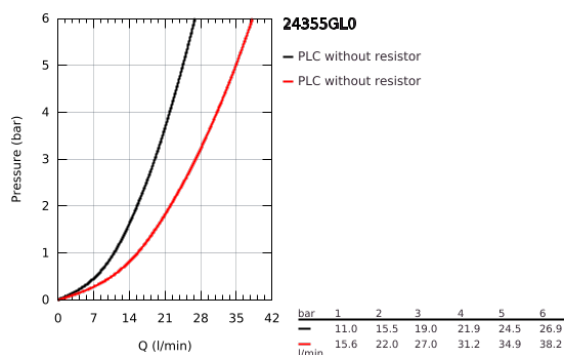
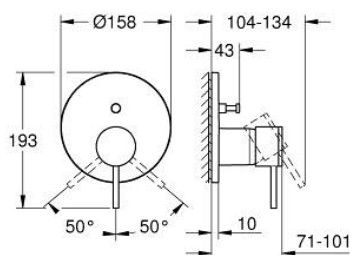


24 355 GL0 ATRIO SINGLE-LEVER MIXER WITH 2-WAY DIVERTER

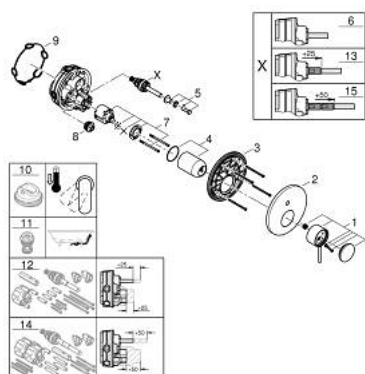


PRODUKTO APRAŠYMAS

- Spalva: cool sunrise
- set for final installation for
- GROHE Rapido SmartBox 35 600/35 604
- GROHE SilkMove 46 mm ceramic cartridge
- GROHE Long-Life finish
- wall escutcheon with GROHE FastFixation (covered escutcheon- and shaft sealing, covered fixing)
- metal escutcheon, retroactively 6° adjustable
- metal lever
- automatic 2-way diverter
- without roughing-in-set
- flow performance: outlet B = 27 l/min, outlet C = 27 l/min



24 355 GL0 ATRIO SINGLE-LEVER MIXER WITH 2-WAY DIVERTER



ATSARGINĖS DALYS , spalio 2021 – dabar

- 1: lever (Produkto nr. 48443GL0)
 - 2: Escutcheon (Produkto nr. 48616GL0)
 - 3: Mounting plate (Produkto nr. 48440000)
 - 4: cap (Produkto nr. 02693GL0)
 - 5: Diverter knob (Produkto nr. 48637GL0)
 - 6: Diverter (Produkto nr. 48634000)
 - 7: Cartridge (Produkto nr. 46048000)
 - 8: Non-return valve (Produkto nr. 49085000)
 - 9: Seal (Produkto nr. 48360000)
 - 10: Temperature limiter (Produkto nr. 46308000)*
 - 11: Backflow protection combination (DIN-EN1717) (Produkto nr. 14055000)*
 - 12: Universal extension set single-lever mixers, 25 mm (Produkto nr. 14056000)*
 - 13: diverter (Produkto nr. 48635000)*
 - 14: Universal extension set single-lever mixers, 50 mm (Produkto nr. 14057000)*
 - 15: diverter (Produkto nr. 48636000)*
- * pasirenkami priedai