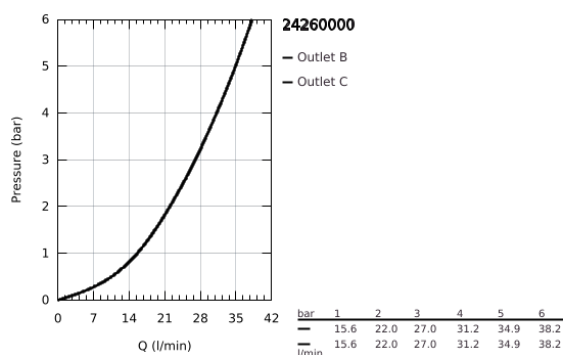
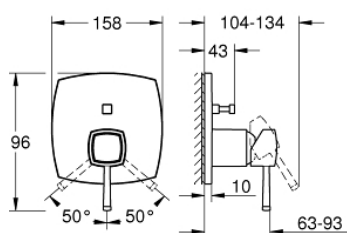


## 24 260 000 GRANDERA SINGLE-LEVER MIXER WITH 2-WAY DIVERTER



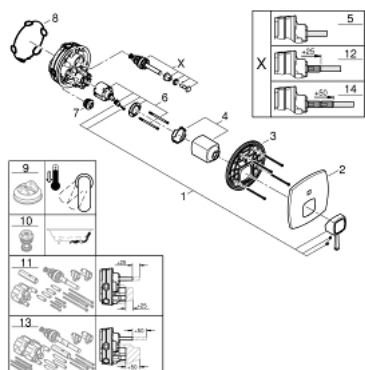
### PRODUKTO APRAŠYMAS

- Spalva: chrome
- set for final installation for
- GROHE Rapido SmartBox 35 600/35 604
- GROHE SilkMove 46 mm ceramic cartridge
- GROHE Long-Life finish
- wall escutcheon with GROHE FastFixation (covered escutcheon- and shaft sealing, covered fixing)
- metal escutcheon, retroactively 6° adjustable
- metal lever
- automatic 2-way diverter
- flow performance: outlet B = 27 l/min, outlet C = 27 l/min
- without roughing-in-set



## 24 260 000 GRANDERA SINGLE-LEVER MIXER WITH 2-WAY DIVERTER

**ATSARGINĖS DALYS** , spalio 2021 – dabar



1: Lever (Produkto nr. 46833000)

2: Escutcheon (Produkto nr. 48612000)

3: Mounting plate (Produkto nr. 48438000)

4: Cap (Produkto nr. 48455000)

5: Diverter (Produkto nr. 48442000)

6: Cartridge (Produkto nr. 46048000)

7: Non-return valve (Produkto nr. 49085000)

8: Seal (Produkto nr. 48360000)

9: Temperature limiter (Produkto nr. 46375000)\*

10: Backflow protection combination (DIN-EN1717) (Produkto nr. 14055000)\*

11: Universal extension set single-lever mixers, 25 mm (Produkto nr. 14056000)  
)\*

12: Diverter (Produkto nr. 48444000)\*

13: Universal extension set single-lever mixers, 50 mm (Produkto nr. 14057000)  
)\*

14: Diverter (Produkto nr. 48445000)\*

\* pasirenkami priedai