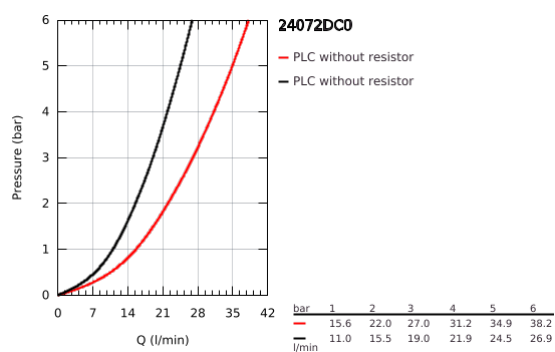
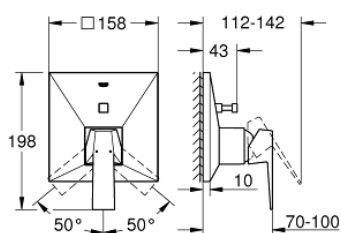


## 24 072 DC0 **ALLURE BRILLIANT SINGLE-LEVER MIXER WITH 2-WAY DIVERTER**

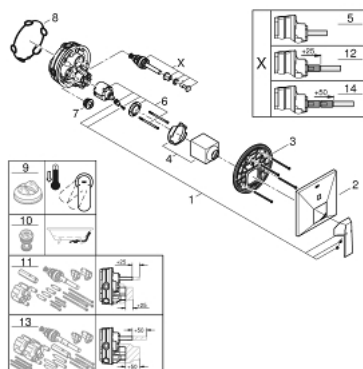


### PRODUKTO APRAŠYMAS

- Spalva: supersteel
- set for final installation for
- GROHE Rapido SmartBox 35 600/35 604
- GROHE SilkMove 46 mm ceramic cartridge
- GROHE Long-Life finish
- wall escutcheon with GROHE FastFixation (covered escutcheon- and shaft sealing, covered fixing)
- metal escutcheon, retroactively 6° adjustable
- metal lever
- automatic 2-way diverter
- flow performance: outlet B = 27 l/min, outlet C = 27 l/min
- without roughing-in-set



## 24 072 DC0 **ALLURE BRILLIANT SINGLE-LEVER MIXER WITH 2-WAY DIVERTER**



**ATSARGINĖS DALYS** , liepos 2017 – dabar

- 1: Lever (Produkto nr. 46804DC0)
  - 2: Escutcheon (Produkto nr. 48437DC0)
  - 3: Mounting plate (Produkto nr. 48438000)
  - 4: Cap (Produkto nr. 46784DC0)
  - 5: Diverter (Produkto nr. 48442DC0)
  - 6: Cartridge (Produkto nr. 46048000)
  - 7: Non-return valve (Produkto nr. 49085000)
  - 8: Seal (Produkto nr. 48360000)
  - 9: Temperature limiter (Produkto nr. 46375000)\*
  - 10: Backflow protection combination (DIN-EN1717) (Produkto nr. 14055000)\*
  - 11: Universal extension set single-lever mixers, 25 mm (Produkto nr. 14056000)\*
  - 12: Diverter (Produkto nr. 48444DC0)\*
  - 13: Universal extension set single-lever mixers, 50 mm (Produkto nr. 14057000)\*
  - 14: Diverter (Produkto nr. 48445DC0)\*
- \* pasirenkami priedai