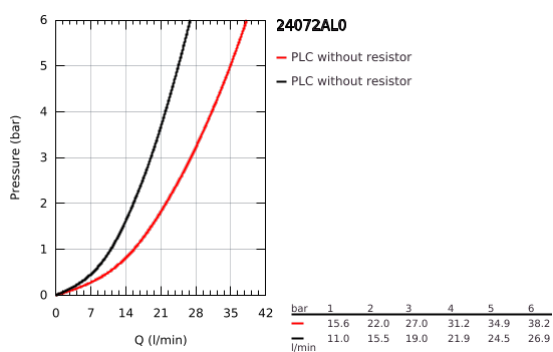


24 072 AL0 ALLURE BRILLIANT SINGLE-LEVER MIXER WITH 2-WAY DIVERTER

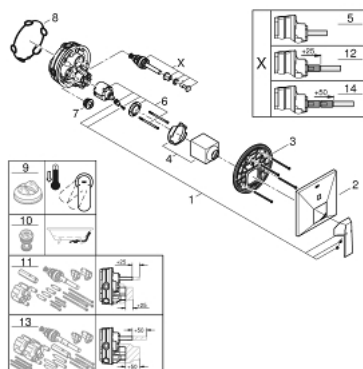


PRODUKTO APRAŠYMAS

- Spalva: brushed hard graphite
- set for final installation for
- GROHE Rapido SmartBox 35 600/35 604
- GROHE SilkMove 46 mm ceramic cartridge
- GROHE Long-Life finish
- wall escutcheon with GROHE FastFixation (covered escutcheon- and shaft sealing, covered fixing)
- metal escutcheon, retroactively 6° adjustable
- metal lever
- automatic 2-way diverter
- flow performance: outlet B = 27 l/min, outlet C = 27 l/min
- without roughing-in-set



24 072 AL0 ALLURE BRILLIANT SINGLE-LEVER MIXER WITH 2-WAY DIVERTER



ATSARGINĖS DALYS , liepos 2017 – dabar

- 1: Lever (Produkto nr. 46804AL0)
- 2: Escutcheon (Produkto nr. 48437AL0)
- 3: Mounting plate (Produkto nr. 48438000)
- 4: Cap (Produkto nr. 46784AL0)
- 5: Diverter (Produkto nr. 48442AL0)
- 6: Cartridge (Produkto nr. 46048000)
- 7: Non-return valve (Produkto nr. 49085000)
- 8: Seal (Produkto nr. 48360000)
- 9: Temperature limiter (Produkto nr. 46375000)*
- 10: Backflow protection combination (DIN-EN1717) (Produkto nr. 14055000)*
- 11: Universal extension set single-lever mixers, 25 mm (Produkto nr. 14056000)*
- 12: Diverter (Produkto nr. 48444AL0)*
- 13: Universal extension set single-lever mixers, 50 mm (Produkto nr. 14057000)*
- 14: Diverter (Produkto nr. 48445AL0)*

* pasirenkami priedai