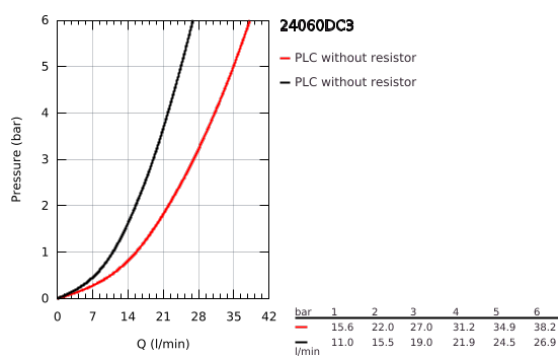
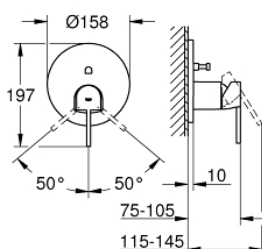


24 060 DC3 GROHE PLUS SINGLE-LEVER MIXER WITH 2-WAY DIVERTER



PRODUKTO APRAŠYMAS

- Spalva: supersteel
- set for final installation for
- GROHE Rapido SmartBox 35 600/35 604
- GROHE SilkMove 46 mm ceramic cartridge
- GROHE Long-Life finish
- wall escutcheon with GROHE FastFixation (covered escutcheon- and shaft sealing, covered fixing)
- metal escutcheon, retroactively 6° adjustable
- metal lever
- automatic 2-way diverter
- flow performance: outlet B = 27 l/min, outlet C = 27 l/min
- without roughing-in-set



24 060 DC3 GROHE PLUS SINGLE-LEVER MIXER WITH 2-WAY DIVERTER



ATSARGINĖS DALYS , sausio 2019 – dabar

- 1: Lever (Produkto nr. 48496DC0)
 - 2: Escutcheon (Produkto nr. 49118DC0)
 - 3: Mounting plate (Produkto nr. 48438000)
 - 4: Cap (Produkto nr. 48495DC0)
 - 5: Diverter (Produkto nr. 48442DC0)
 - 6: Cartridge (Produkto nr. 46048000)
 - 7: Non-return valve (Produkto nr. 49085000)
 - 8: Seal (Produkto nr. 48360000)
 - 9: Temperature limiter (Produkto nr. 46375000)*
 - 10: Backflow protection combination (DIN-EN1717) (Produkto nr. 14055000)*
 - 11: Universal extension set single-lever mixers, 25 mm (Produkto nr. 14056000)*
 - 12: Diverter (Produkto nr. 48444DC0)*
 - 13: Universal extension set single-lever mixers, 50 mm (Produkto nr. 14057000)*
 - 14: Diverter (Produkto nr. 48445DC0)*
- * pasirenkami priedai