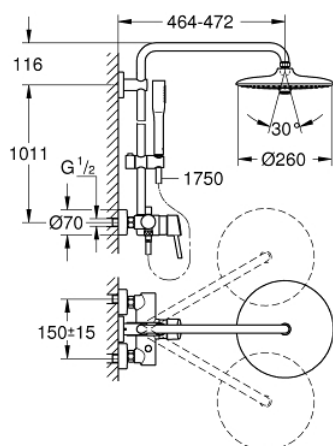


23 061 002 EUPHORIA CONCETTO SYSTEM 260 SHOWER SYSTEM WITH SINGLE LEVER MIXER FOR WALL MOUNTING

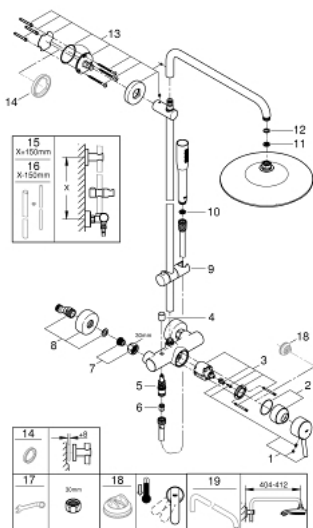


PRODUKTO APRAŠYMAS

- Spalva: chrome
- consisting of:
 - horizontal swivable 450 mm shower arm
 - exposed single-lever shower mixer with diverter
 - allows change between:
 - head shower Euphoria 260 (26 457)
 - 3 spray patterns:
 - Rain, SmartRain, Jet
 - with ball joint
 - rotation angle $\pm 15^\circ$
- hand shower Euphoria Cosmopolitan Stick (27 400 000)
- spray pattern: Rain
- adjustable in height with gliding element
- Silverflex shower hose 1750 mm (28 388)
- GROHE Water Saving 9.5 l/min flow limiter
- GROHE SilkMove 46 mm ceramic cartridge
- GROHE DreamSpray perfect spray pattern
- GROHE Long-Life finish
- SpeedClean anti-lime system
- Inner WaterGuide for a longer life
- TwistStop to prevent hose from twisting
- suitable for instantaneous heaters from 18 kW/h
- minimum flow rate 7 l/min.



23 061 002 EUPHORIA CONCETTO SYSTEM 260 SHOWER SYSTEM WITH SINGLE LEVER MIXER FOR WALL MOUNTING



ATSARGINĖS DALYS, spalio 2016 – dabar

- 1: Lever (Produkto nr. 46723000)
- 2: Cap (Produkto nr. 46025000)
- 3: Cartridge (Produkto nr. 46048000)
- 4: Diverter knob (Produkto nr. 64309000)
- 5: Diverter (Produkto nr. 65655000)
- 6: Non-return valve (Produkto nr. 08565000)
- 7: Screw connection 1/2" (Produkto nr. 45044000)
- 7.1: Seal Ø 15 x Ø 2 (Produkto nr. 0311900M)
- 8: S-union (Produkto nr. 12662000)
- 9: Glide element (Produkto nr. 12140000)
- 10: Dirt strainer (Produkto nr. 0700200M)
- 11: Dirt strainer (Produkto nr. 48007000)
- 12: Fibre seal Ø 18,5 x Ø 12 x 2 (Produkto nr. 0138900M)
- 13: Shower bar holder (Produkto nr. 48279000)
- 14: Compensation disc (Produkto nr. 27180000)*
- 15: Shower system pipe for retrofitting (Produkto nr. 48053000)*
- 16: Shower system pipe for retrofitting (Produkto nr. 48054000)*
- 17: Special spanner (Produkto nr. 19377000)*
- 18: Temperature limiter (Produkto nr. 46375000)*
- 19: Shower arm for shower systems (Produkto nr. 14047000)*

* pasirenkami priedai