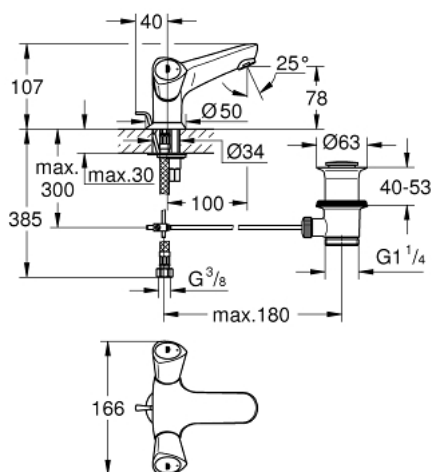
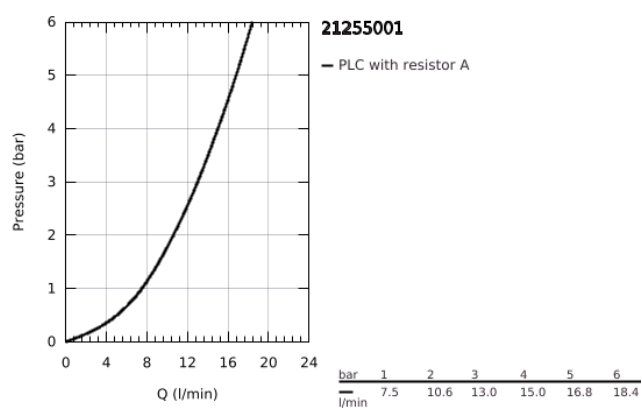


## 21 255 001 **COSTA S ONE-HOLE BASIN MIXER, 1/2"**

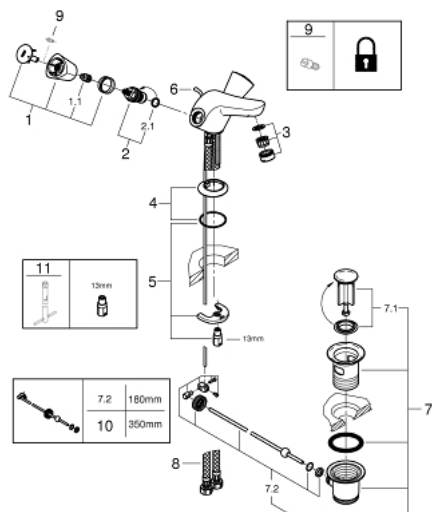


### PRODUKTO APRAŠYMAS

- Spalva: chrome
- metal handles
- heat-insulated
- screwable
- Carbodur® headpart
- cast spout with mousseur
- pop-up waste set 1 1/4"
- flexible connection hoses
- GROHE Long-Life finish



## 21 255 001 **COSTA S ONE-HOLE BASIN MIXER, 1/2"**



**ATSARGINĖS DALYS** , rugpjūčio 2016 – dabar

- 1: Handle (Produkto nr. 45995000)
- 1.1: Snap insert (Produkto nr. 0538600M)
- 2: Ceramic headpart, 1/2" (Produkto nr. 45346000)
- 2.1: O-ring Ø 18.2 x Ø 1.7 (Produkto nr. 0392400M)
- 3: Mousseur (Produkto nr. 13929000)
- 4: Escutcheon (Produkto nr. 48004000)
- 5: Shank mounting kit (Produkto nr. 46249000)
- 6: Lift rod (Produkto nr. 65936PD0)
- 7: Waste set 1 1/4" (Produkto nr. 28910000)
- 7.1: Plug (Produkto nr. 07182000)
- 7.2: Eccentric rod (Produkto nr. 07052000)
- 8: Connection hose (Produkto nr. 46255000)
- 9: Screw for Costa/Avina products (Produkto nr. 48013000)\*
- 10: Eccentric rod (Produkto nr. 07341000)\*
- 11: Mounting wrench (Produkto nr. 19017000)\*

\* pasirenkami priedai