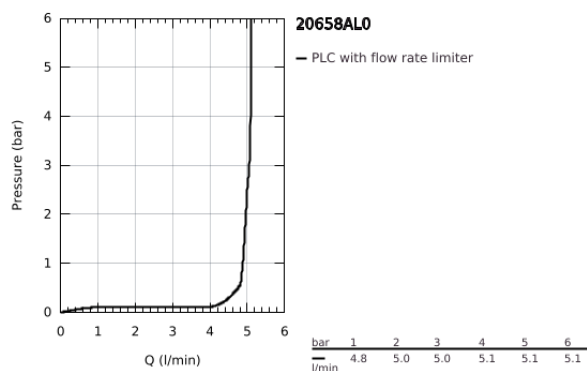
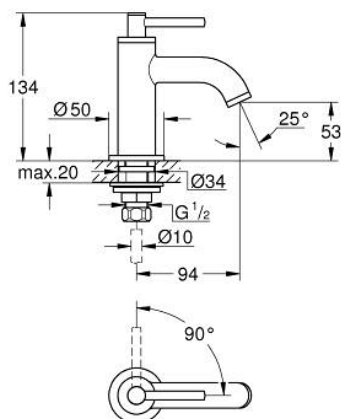


20 658 AL0 ATRIO PILLAR TAP 1/2"

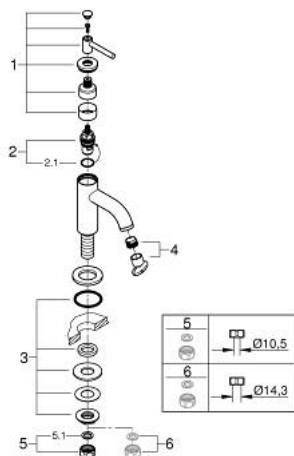


PRODUKTO APRAŠYMAS

- Spalva: brushed hard graphite
- headpart 1/2" - 90°
- GROHE Long-Life finish
- GROHE Water Saving - Less water, perfect flow
- maximum flow rate (at 3 bar): 5 l/min
- rapid installation system
- mousseur
- with lever handle



20 658 AL0 ATRIO PILLAR TAP 1/2"



ATSARGINĖS DALYS , spalio 2021 – dabar

- 1: Lever handles (Produkto nr. 14216AL0)
- 2: Ceramic headpart, 1/2" (Produkto nr. 45882000)
- 2.1: O-ring Ø 18.2 x Ø 1.7 (Produkto nr. 0392400M)
- 3: Shank mounting kit (Produkto nr. 45004000)
- 4: Laminar flow straightener (Produkto nr. 48408000)
- 5: Coupling nut 1/2" (Produkto nr. 1290100M)
- 5.1: Fibre seal Ø 18,5 x Ø 12 x 2 (Produkto nr. 0138900M)
- 6: Coupling nut 1/2" x 14.5 mm (Produkto nr. 1290200M)*

* pasirenkami priedai