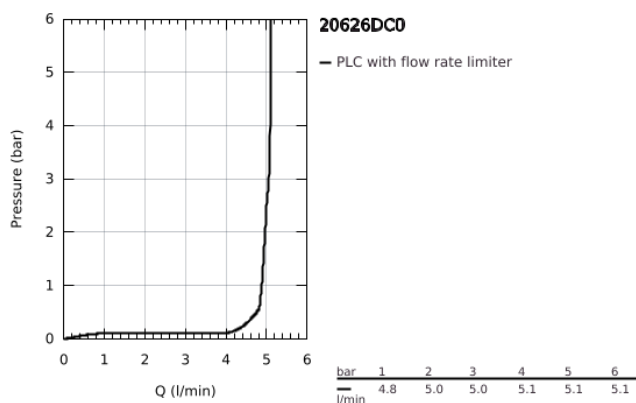
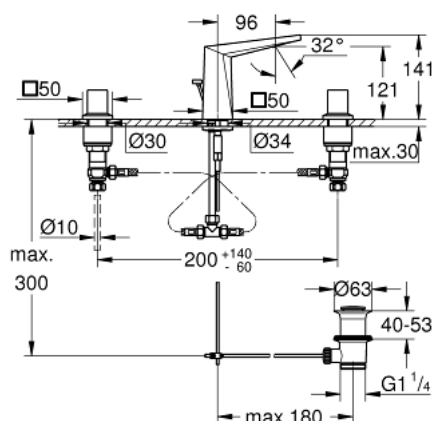


20 626 DC0 ALLURE BRILLIANT THREE-HOLE BASIN MIXER 1/2" M-SIZE



PRODUKTO APRAŠYMAS

- Spalva: supersteel
- ceramic headparts 1/2", 90°
- GROHE Long-Life finish
- GROHE Water Saving - Less water, perfect flow
- maximum flow rate (at 3 bar): 5 l/min
- low spout with integrated mousseur
- pop-up waste set 1 1/4"
- pressure-proof, flexible connection hoses between spout and side valves



20 626 DC0 ALLURE BRILLIANT THREE-HOLE BASIN MIXER 1/2" M-SIZE



ATSARGINĖS DALYS , spalio 2021 – dabar

- 1: Handle pair (Produkto nr. 48320DC0)
- 2: Ceramic headpart, 1/2" (Produkto nr. 45882000)
- 2.1: O-ring Ø 18.2 x Ø 1.7 (Produkto nr. 0392400M)
- 3: Ceramic headpart, 1/2" (Produkto nr. 45883000)
- 3.1: O-ring Ø 18.2 x Ø 1.7 (Produkto nr. 0392400M)
- 4: Pop-up rod (Produkto nr. 46787DC0)
- 5: Race (Produkto nr. 46794DC0)
- 6: Flow limiter (Produkto nr. 48160000)
- 7: Shank mounting kit (Produkto nr. 46671000)
- 8: Compression union 3/8" (Produkto nr. 12914000)
- 8.1: Seal (Produkto nr. 45279000)
- 9: Waste set 1 1/4" (Produkto nr. 28910DC0)
- 9.1: Plug (Produkto nr. 07182DC0)
- 9.2: Eccentric rod (Produkto nr. 07052000)
- 10: Coupling nut 1/2" (Produkto nr. 1290100M)
- 10.1: Fibre seal Ø 18,5 x Ø 12 x 2 (Produkto nr. 0138900M)
- 11: Flexible connection hose (Produkto nr. 45704000)
- 12: Mounting wrench (Produkto nr. 19017000)*
- 13: Eccentric rod (Produkto nr. 07341000)*
- 14: Coupling nut 1/2" x 14.5 mm (Produkto nr. 1290200M)*
- 14.1: Fibre seal Ø 18,5 x Ø 12 x 2 (Produkto nr. 0138900M)

* pasirenkami priedai