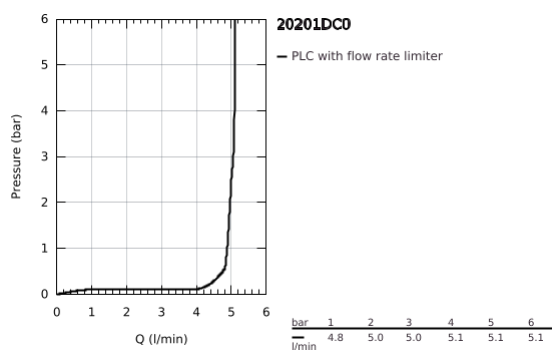
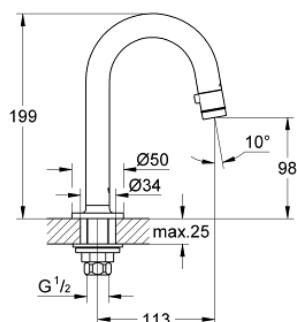


20 201 DC0 UNIVERSAL PILLAR TAP 1/2"

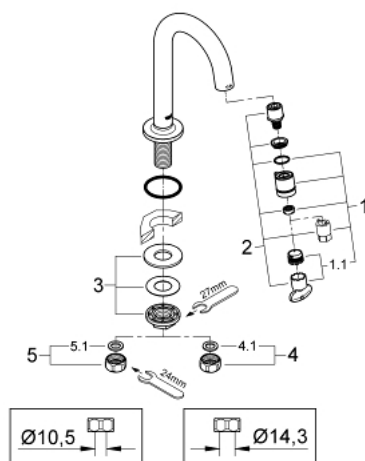


PRODUKTO APRAŠYMAS

- Spalva: supersteel
- C-spout
- flow-stop mousseur
- ceramic disk headpart
- union nut 1/2"
- with 10.5 mm drilling
- GROHE Long-Life finish
- GROHE Water Saving - Less water, perfect flow
- maximum flow rate (at 3 bar): 5 l/min
- projection 113 mm



20 201 DC0 **UNIVERSAL PILLAR TAP 1/2"**



ATSARGINÉS DALYS , spalio 2019 – dabar

1: Handle (Produkto nr. 48041DC0)

2: Headpart (Produkto nr. 48042000)

3: Shank mounting kit (Produkto nr. 45004000)

4: Coupling nut 1/2" x 14.5 mm (Produkto nr. 1290200M)

4.1: Fibre seal Ø 18,5 x Ø 12 x 2 (Produkto nr. 0138900M)

5: Coupling nut 1/2" (Produkto nr. 1290100M)

5.1: Fibre seal Ø 18,5 x Ø 12 x 2 (Produkto nr. 0138900M)