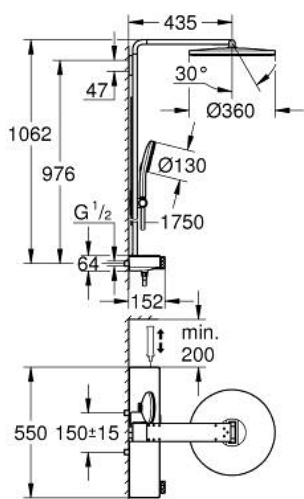


## 10 168 0DA 00 RAINSHOWER AQUA PURE SHOWER SYSTEM WITH THERMOSTAT FOR WALL MOUNTING



### PRODUKTO APRAŠYMAS (1/2)

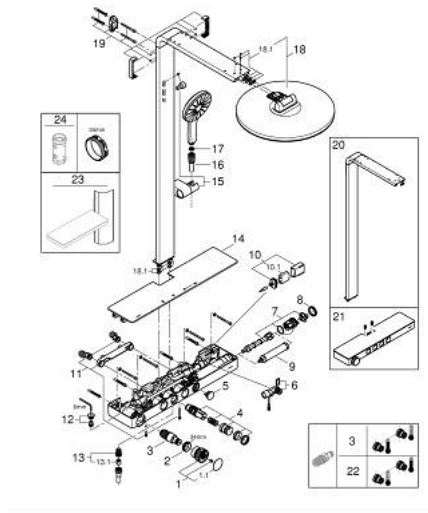
- Spalva: warm sunset
- consisting of:
  - horizontal 435 mm shower arm
  - exposed SmartControl thermostat
  - allows change between:
    - head shower Rainshower Aqua Duo round, 360 mm, black acrylic spray plate
    - swing angle 0° - 30°
  - 2 spray patterns:
    - GROHE PureRain, ActiveRain
  - hand shower Rainshower Aqua 130 (101 676), black acrylic spray plate
  - 3 spray patterns:
    - GROHE Rain, Rain+ and ActiveMassage
  - adjustable in height with gliding element
  - initial Rainshower Aqua Pure unit (101 672 9990) enclosed
  - shower hose 1750 mm
  - GROHE Rainshower Aqua Pure removes chlorine and odor (hand shower)
  - GROHE SmartTip showering spray selection via push of a ring
  - GROHE Water Saving - Less water, perfect flow
  - maximum flow rate (at 3 bar): 15 l/min
  - GROHE SmartControl with recessed metal buttons, push for ON-OFF, turn for volume adjustment from GROHE Water Saving to full flow
  - GROHE ProGrip Metal with knurl structure
  - GROHE TurboStat compact cartridge with wax thermoelement
  - GROHE SafeStop at 38°C
  - GROHE SafeStop Plus optional temperature limiter at 43°C included
  - integrated GROHE EasyReach shower tray (black glass)
  - GROHE DreamSpray perfect spray pattern
  - GROHE Long-Life finish
  - SpeedClean anti-lime system
  - Inner WaterGuide for a longer life
  - TwistStop to prevent hose from twisting
  - GROHE CoolTouch prevents scalding on hot surfaces

## 10 168 0DA 00 **RAINSHOWER AQUA PURE SHOWER SYSTEM WITH THERMOSTAT FOR WALL MOUNTING**

### **PRODUKTO APRAŠYMAS (2/2)**

- suitable for instantaneous heaters from 18 kW/h
- minimum flow rate 5 l/min.
- min. recommended pressure 1.0 bar
- internal 6 V lithium battery (42 886 000) type CR-P2
- battery lifetime approx. 10 years
- replacement filter: Rainshower Aqua Pure unit (101 672 9990)
- optional: Rainshower Aqua glass shelf (101 677)
- to change the filter, a minimum distance of 20 cm from the right-hand side wall must be maintained

## 10 168 0DA 00 RAINSHOWER AQUA PURE SHOWER SYSTEM WITH THERMOSTAT FOR WALL MOUNTING



**ATSARGINĖS DALYS** , sausio 2023 – dabar

- 1: temperature control handle (Produkto nr. 108445DA00)
  - 1.1: cap (Produkto nr. 108446DA00)
  - 2: Fitting ring (Produkto nr. 47743000)
  - 3: Thermostatic compact cartridge 1/2" (Produkto nr. 47439000)
  - 4: Pushbutton incl. cartridge (Produkto nr. 108447DA00)
  - 5: pushbutton filter (Produkto nr. 108448DA00)
  - 6: flow sensor (Produkto nr. 1084529990)
  - 7: filter lock incl. dummy (Produkto nr. 1084519990)
  - 8: cap filter (Produkto nr. 108449DA00)
  - 9: Unit for Rainshower Aqua Pure shower systems (Produkto nr. 1016729990)
  - 10: Battery housing (Produkto nr. 42393000)
  - 10.1: Battery (Produkto nr. 42886000)
  - 11: S-Union 1/2" X 3/4" (Produkto nr. 1084559990)
  - 12: non-return valves (Produkto nr. 108460999M)
  - 13: outlet nipple (Produkto nr. 1084540000)
  - 13.1: Non-return valve (Produkto nr. 08565000)
  - 14: cover (Produkto nr. 108484K000)
  - 15: glider (Produkto nr. 108592DA00)
  - 16: shower hose (Produkto nr. 108655DA00)
  - 17: Dirt strainer (Produkto nr. 0700200M)
  - 18: spare head shower (Produkto nr. 108618DA00)
  - 18.1: set of replacement parts (Produkto nr. 108603DA00)
  - 19: shower rail holder (Produkto nr. 108588DA00)
  - 20: exchange shower system (Produkto nr. 108558DA00)
  - 21: exchange-thermostat (Produkto nr. 108549DA00)
  - 22: GROHE TurboStat cartridge 1/2" (Produkto nr. 47175000)\*
  - 23: Shelf (Produkto nr. 101677DA00)\*
  - 24: Socket spanner (Produkto nr. 19332000)\*
- \* pasirenkami priedai