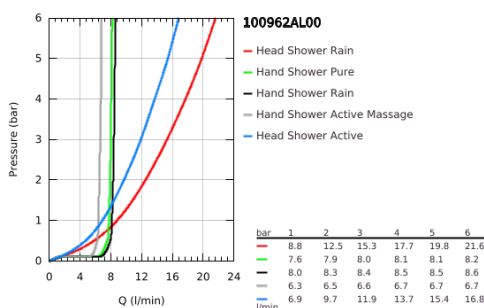


10 096 2AL 00 RAINSHOWER AQUA PURE SHOWER SYSTEM WITH THERMOSTAT FOR WALL MOUNTING



PRODUKTO APRAŠYMAS (1/2)

- Spalva: brushed hard graphite
- consisting of:
 - horizontal 435 mm shower arm
 - exposed SmartControl thermostat with metal housing
 - allows change between:
 - head shower Rainshower Aqua Duo square 400 x 230 mm, black acrylic spray plate
 - swing angle 0° - 30°
 - 2 spray patterns:
 - GROHE PureRain, ActiveRain
 - hand shower Rainshower Aqua 130 (101 676), black acrylic spray plate
 - 3 spray patterns:
 - GROHE Rain, Rain+ and ActiveMassage
 - adjustable in height with gliding element
 - initial Rainshower Aqua Pure unit (101 672 9990) enclosed
 - shower hose 1750 mm
 - GROHE Rainshower Aqua Pure removes chlorine and odor (hand shower)
 - GROHE SmartTip showering spray selection via push of a ring
 - GROHE Water Saving - Less water, perfect flow
 - maximum flow rate (at 3 bar): 15 l/min
 - GROHE SmartControl with recessed metal buttons, push for ON-OFF, turn for volume adjustment from GROHE Water Saving to full flow
 - GROHE ProGrip Metal with knurl structure
 - GROHE TurboStat compact cartridge with wax thermoelement
 - GROHE SafeStop at 38°C
 - GROHE SafeStop Plus optional temperature limiter at 43°C included
 - integrated GROHE EasyReach shower tray (black glass)
 - GROHE DreamSpray perfect spray pattern
 - GROHE Long-Life finish
 - SpeedClean anti-lime system
 - Inner WaterGuide for a longer life
 - TwistStop to prevent hose from twisting
 - GROHE CoolTouch prevents scalding on hot surfaces

Pure Freude
an Wasser

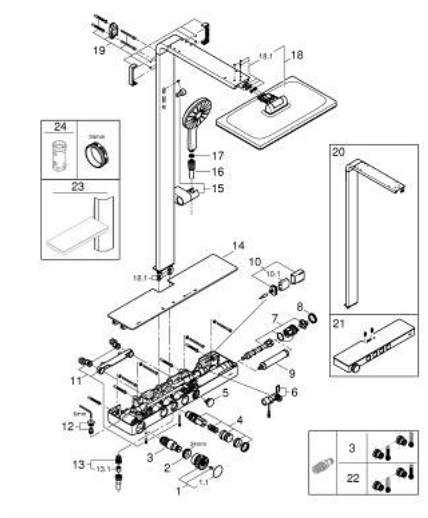


10 096 2AL 00 RAINSHOWER AQUA PURE SHOWER SYSTEM WITH THERMOSTAT FOR WALL MOUNTING

PRODUKTO APRAŠYMAS (2/2)

- suitable for instantaneous heaters from 18 kW/h
- minimum flow rate 5 l/min.
- min. recommended pressure 1.0 bar
- internal 6 V lithium battery (42 886 000) type CR-P2
- battery lifetime approx. 10 years
- replacement filter: Rainshower Aqua Pure unit (101 672 9990)
- optional: Rainshower Aqua glass shelf (101 677)
- to change the filter, a minimum distance of 20 cm from the right-hand side wall must be maintained

10 096 2AL 00 RAINSHOWER AQUA PURE SHOWER SYSTEM WITH THERMOSTAT FOR WALL MOUNTING



ATSARGINĖS DALYS, lapkričio 2022 – dabar

- 1: temperature control handle (Produkto nr. 108445AL00)
- 1.1: cap (Produkto nr. 108446AL00)
- 2: Fitting ring (Produkto nr. 47743000)
- 3: Thermostatic compact cartridge 1/2" (Produkto nr. 47439000)
- 4: Pushbutton incl. cartridge (Produkto nr. 108447AL00)
- 5: pushbutton filter (Produkto nr. 108448AL00)
- 6: flow sensor (Produkto nr. 1084529990)
- 7: filter lock incl. dummy (Produkto nr. 1084519990)
- 8: cap filter (Produkto nr. 108449AL00)
- 9: Unit for Rainshower Aqua Pure shower systems (Produkto nr. 1016729990)
- 10: Battery housing (Produkto nr. 42393000)
- 10.1: Battery (Produkto nr. 42886000)
- 11: S-Union 1/2" X 3/4" (Produkto nr. 1084559990)
- 12: non-return valves (Produkto nr. 108460999M)
- 13: outlet nipple (Produkto nr. 1084540000)
- 13.1: Non-return valve (Produkto nr. 08565000)
- 14: cover (Produkto nr. 108484K000)
- 15: glider (Produkto nr. 108592AL00)
- 16: shower hose (Produkto nr. 108655A000)
- 17: Dirt strainer (Produkto nr. 0700200M)
- 18: spare head shower (Produkto nr. 108652AL00)
- 18.1: set of replacement parts (Produkto nr. 108603AL00)
- 19: shower rail holder (Produkto nr. 108588AL00)
- 20: exchange shower system (Produkto nr. 108558AL00)
- 21: exchange-thermostat (Produkto nr. 108549AL00)
- 22: GROHE TurboStat cartridge 1/2" (Produkto nr. 47175000)*
- 23: Shelf (Produkto nr. 101677AL00)*
- 24: Socket spanner (Produkto nr. 19332000)*

* pasirenkami priedai