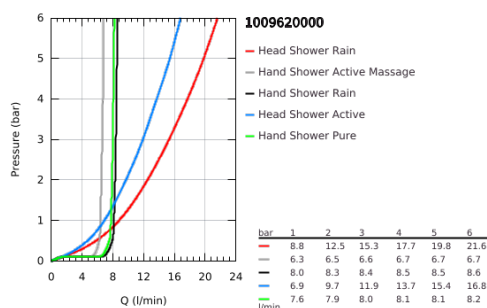


10 096 200 00 RAINSHOWER AQUA PURE SHOWER SYSTEM WITH THERMOSTAT FOR WALL MOUNTING



PRODUKTO APRAŠYMAS (1/2)

- Spalva: chrome
- consisting of:
 - horizontal 435 mm shower arm
 - exposed SmartControl thermostat with metal housing
 - allows change between:
 - head shower Rainshower Aqua Duo square, 400 x 230 mm, white acrylic spray plate
 - swing angle 0° - 30°
 - 2 spray patterns:
 - GROHE PureRain, ActiveRain
- hand shower Rainshower Aqua 130 (101 676 0000), white acrylic spray plate
 - 3 spray patterns:
 - GROHE Rain, Rain+ and ActiveMassage
 - adjustable in height with gliding element
- initial Rainshower Aqua Pure unit (101 672 9990) enclosed
- shower hose 1750 mm
- GROHE Rainshower Aqua Pure removes chlorine and odor (hand shower)
- GROHE SmartTip showering spray selection via push of a ring
- GROHE Water Saving - Less water, perfect flow
- maximum flow rate (at 3 bar): 15 l/min
- GROHE SmartControl with recessed metal buttons, push for ON-OFF, turn for volume adjustment from GROHE Water Saving to full flow
- GROHE ProGrip Metal with knurl structure
- GROHE TurboStat compact cartridge with wax thermoelement
- GROHE SafeStop at 38°C
- GROHE SafeStop Plus optional temperature limiter at 43°C included
- integrated GROHE EasyReach shower tray (white glass)
- GROHE DreamSpray perfect spray pattern
- GROHE Long-Life finish
- SpeedClean anti-lime system
- Inner WaterGuide for a longer life
- TwistStop to prevent hose from twisting

Pure Freude
an Wasser

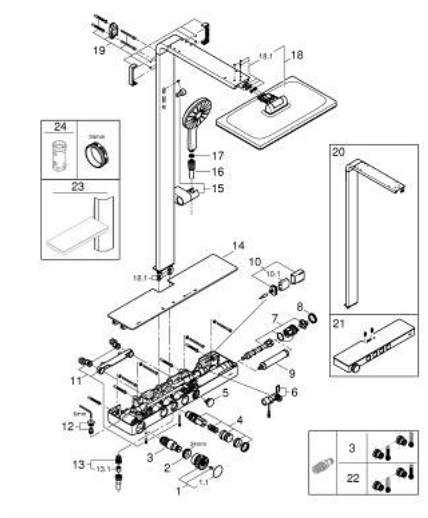


10 096 200 00 **RAINSHOWER AQUA PURE SHOWER SYSTEM WITH THERMOSTAT FOR WALL MOUNTING**

PRODUKTO APRAŠYMAS (2/2)

- GROHE CoolTouch prevents scalding on hot surfaces
- suitable for instantaneous heaters from 18 kW/h
- minimum flow rate 5 l/min.
- min. recommended pressure 1.0 bar
- internal 6 V lithium battery (42 886 000) type CR-P2
- battery lifetime approx. 10 years
- replacement filter: Rainshower Aqua Pure unit (101 672 9990)
- optional: Rainshower Aqua glass shelf (101 677)
- to change the filter, a minimum distance of 20 cm from the right-hand side wall must be maintained

10 096 200 00 RAINSHOWER AQUA PURE SHOWER SYSTEM WITH THERMOSTAT FOR WALL MOUNTING



ATSARGINĖS DALYS, lapkričio 2022 – dabar

- 1: temperature control handle (Produkto nr. 1084450000)
 - 1.1: cap (Produkto nr. 1084460000)
 - 2: Fitting ring (Produkto nr. 47743000)
 - 3: Thermostatic compact cartridge 1/2" (Produkto nr. 47439000)
 - 4: Pushbutton incl. cartridge (Produkto nr. 1084470000)
 - 5: pushbutton filter (Produkto nr. 1084480000)
 - 6: flow sensor (Produkto nr. 1084529990)
 - 7: filter lock incl. dummy (Produkto nr. 1084519990)
 - 8: cap filter (Produkto nr. 1084490000)
 - 9: Unit for Rainshower Aqua Pure shower systems (Produkto nr. 1016729990)
 - 10: Battery housing (Produkto nr. 42393000)
 - 10.1: Battery (Produkto nr. 42886000)
 - 11: S-Union 1/2" X 3/4" (Produkto nr. 1084559990)
 - 12: non-return valves (Produkto nr. 108460999M)
 - 13: outlet nipple (Produkto nr. 1084540000)
 - 13.1: Non-return valve (Produkto nr. 08565000)
 - 14: cover (Produkto nr. 108484LN00)
 - 15: glider (Produkto nr. 1085920000)
 - 16: shower hose (Produkto nr. 1086550000)
 - 17: Dirt strainer (Produkto nr. 0700200M)
 - 18: spare head shower (Produkto nr. 1086520000)
 - 18.1: set of replacement parts (Produkto nr. 1086030000)
 - 19: shower rail holder (Produkto nr. 1085880000)
 - 20: exchange shower system (Produkto nr. 1085580000)
 - 21: exchange-thermostat (Produkto nr. 1085490000)
 - 22: GROHE TurboStat cartridge 1/2" (Produkto nr. 47175000)*
 - 23: Shelf (Produkto nr. 1016770000)*
 - 24: Socket spanner (Produkto nr. 19332000)*
- * pasirenkami priedai